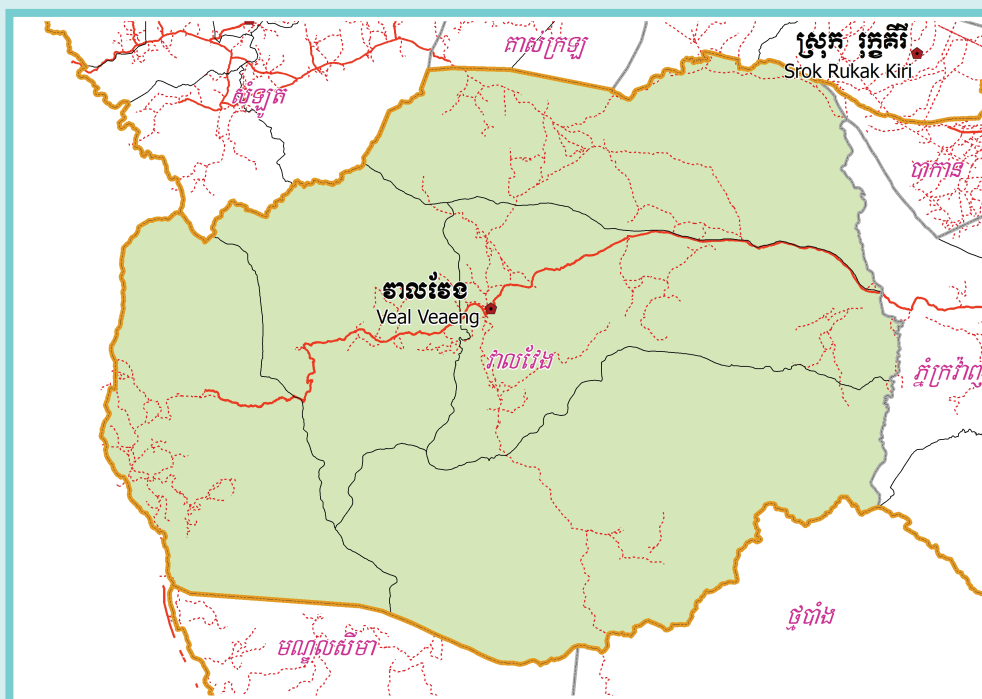


KINGDOM OF CAMBODIA
Nation Religion King



**National Committee for Sub-National
Democratic Development (NCDD)**



VEAL VEAENG DISTRICT DATA BOOK 2009

District Code Nr: 1506
Pursat Province

October 2009

Veal Veaeng District Data Book 2009

District Code Nr: 1506

Pursat Province

Table of Contents

List of Abbreviations	i
Glossary.....	ii
Preface	vi
Introduction	vii
SECTION A: GEOGRAPHY	1
1 Administration and Infrastructure.....	3
2 Land Use and Natural Resources.....	5
3 Geography	7
3.1 Land Area	7
3.2 Distances between Offices	7
SECTION B: DISTRICT PROFILE	9
1 General Information	11
1.1 Population of the District.....	11
1.2 Occupations	12
1.3 Property	14
2 Infrastructure and Economy.....	16
2.1 Roads in meters over 3 years.....	16
2.2 Sewerage Pipes in meters over 3 years.....	16
2.3 Drainage and Bridges	16
2.4 Services in the District	16
2.5 Agriculture.....	17
3 Social Aspects	27
3.1 Education	27
3.2 Health.....	33
3.3 Water and Sanitation	34
3.4 Vulnerable groups.....	38
3.5 Migration	40
4 Natural Resources and Environment (NRE).....	42
4.1 Families involved with NRE issues over 3 years	42
4.2 Percentage of Families involved with Natural Resource issues, by Commune, for 2008	42
4.3 Percentage Houses with access to Garbage collection and Families affected by environmental Pollution, by Commune, for 2008	42
4.4 Percentage Families using chemical Fertilizer and chemical Pesticides, by Commune, for 2008 ..	42
5 Administration and Security	43

5.1	Birth Registration across 3 years.....	43
5.2	Number of unregistered Infants born in 2008, by Commune	43
5.3	Registered criminal Cases over 3 years	43
5.4	Registered criminal Cases per 10,000 people, by Commune, for 2008.....	43
5.5	Number of registered Land Disputes, by Commune, in 2008	43
6	Gender	44
6.1	Registered Domestic Violence over 3 years.....	44
6.2	Percentage of registered cases of Families experiencing domestic Violence, by Commune, in 2008	44
6.3	Women's involvement over 3 years.....	44
6.4	Percentage of Female Participants in Civil Society and of 18-60 year women with uncertain Jobs, by Commune, in 2008	45
6.5	Female-headed Households over 3 years.....	45
6.6	Percentage female-headed Households and with Children of less than 5 years old, by Commune, in 2008	45
7	Indigenous People in the District	46
7.1	Ethnic Minorities in the District over 3 years.....	46
7.2	Other Minorities in the District over 3 years.....	46
	SECTION C: PLANS AND PROJECTS	47
8	Priorities and Plans	49
8.1	Priorities of Commune Councils for 2009 in the District by Sector	49
8.2	Temporary Agreements by Commune, for 2009	53
8.3	Outputs, estimated and actual costs of C/S Fund Projects between 2005 and 2008, by Commune	56
8.4	Total Expenditure on C/S Fund Projects by sector and commune between 2005 and 2008.....	56
8.5	Actual 2009 C/S Fund projects by Commune	57
9	District level Projects from 2006 to 2009	58
9.1	District Initiative Infrastructure Projects from 2006 to 2009	58
9.2	District Initiative Service Projects from 2006 to 2009	59
9.3	Inter Commune Council Projects in 2008 and 2009	60
9.4	Other Projects in 2008 and 2009	60
	SECTION D: SERVICES AND ORGANIZATIONS	61
10	Infrastructure.....	63
10.1	Length of and Expenditure on Roads in 2008, by District	63
10.2	Scale of and Expenditure on Irrigation in 2008, by District.....	63
10.3	Power Supply in 2008, by District	64
11	Health Facilities.....	65

11.1 Health Facilities in the Province, by Operational District.....	65
11.2 Health Facilities and Staff in the province, by Operational District.....	65
11.3 Deliveries in 2007 in the Province, by Operational District.....	67
12 Education	68
12.1 Schools, Classes, Students, Staff, for for all levels, for 2007/2008 by District.....	68
12.2 Characteristics of Schools and School Principals for 2007/2008 by Commune	68
12.3 Enrolment by Level of Education, 2006/2007 by Commune	69
12.4 Enrolment by Level of Education, 2007/2008 by Commune	69
12.5 Aspects of Enrolment for 2007/2008 by Commune.....	69
12.6 School Buildings for all schools in the District for 2007/2008, by Commune	70
12.7 Conditions of Classrooms and Existence of Separate School Office and Library, by Commune	70
12.8 Community Participation and Financing across all schools in the District for 2007/2008 by Commune	70
12.9 Percentage Student Flow Rates and Graduation by level 2006/2007, by Commune	71
13 Staff and Resources at the District	72
13.1 District Councilors elected in 2009	72
13.2 Committees of the Council.....	72
13.3 Board of Governors.....	72
13.4 Offices under Sala Krong, Sala Srok and Sala Khan	72
13.5 Municipality/District/Khan line offices.....	73
13.6 Properties and Equipment of District Administration	73
13.7 Registered Revenue of the District Administration in 2008	74
13.8 Services in the District	74
13.9 Civil Society Organizations active in the District.....	75
13.10 Private Sector Organizations.....	76
SECTION E: POVERTY DATA	77
14 Data on Poverty	79
14.1 Predicted Poverty Rates for 2009, by commune	79
14.2 Poverty data from survey.....	79

List of Abbreviations

#	Number
AGR	Agriculture
BR	Birth Registration
C. Pilot	Piloted Commune
C/S	Commune / Sangkat
CBO	Community-Based Organization
CDB	Commune Database
CDPD	Commune Development and Planning Database
CIP	Commune Investment plan
CLTS	Community Led-Total Sanitation
Comm.	Commune
Com Cov	Commune Covered
CPA	Complementary Package of Activities
CPS	Community Preschool
CCWC	Commune Committees for Women and Children
DANIDA	Danish International Development Agency
DDLG	Democratic Development and Local Governance Project (EC-UNDP)
DFID	Department For International Development (UK)
DIP	District Initiative Project
DIS	District Information System
District PDRD	District Office of Rural Development
District WP	District Work Plan
DIW	District Integration Workshop
DoLA	Department of Local Administration
Dr	Doctor
DWRM	District Office of Water Resource and Meterology
ECD	Early Childhood education (part of PE)
EMIS	Education Management Information System
Event IC	Celebration of International Days
FDH	Former District Hospital
GTZ	German Society for Technical Cooperation (Gesellschaft für Technische Zusammenarbeit GmbH)
Ha	Hectare
HC	Health Center
HC (NB)	Health Center (no building)
HH	Headed Household
HSI	Intervention for Health
HP	Health Post
HW	Hand Washing
ICC	Inter Commune Council
IFAD	International Fund for Agricultural Development
IND	Industry
Inter-commune	Inter-Commune Project Management Committee or Inter-commune project
IO	International Organization
LASED	Land Allocation for Socio-Economic Development
LGCR	Local Governance for Children's Rights
M&E	Monitoring and Evaluation
MA	Medical Assistant
MoEYS	Ministry of Education, Youth and Sports
MoH	Ministry of Health

MoP	Ministry of Planning
MPA	Minimum Package of Activities
MW1	Primary Midwives
MW2	Secondary Midwives
n/a	Not available
NCD	National Contracts Database
NCDD	National Committee for Sub-National Democratic Development
NGO	Non-Governmental Organization
NRML	Natural Resources Management and Livelihood
NU1	Primary Nurse
NU2	Secondary Nurse
OD	Operational District
ODF	Open Defecation Free
Ope. Costs	Operational Costs
Others	Other Staff
PBW	Public Works
PDoEYS	Provincial Department of Education, Youth and Sport
PDRD	Provincial Department of Rural Development
PDWRM	Provincial Department of Water Resource and Meteorology
PE	Parenting Education
PHAST	Participatory Hygiene and Sanitation Transformation
PHD	Provincial Health Department
PID	Project Information Database
PMC	Project Management Committee
Pop 04-05	Population Covered 2004 or 2005
PSDD	Project to Support Democratic Development through Decentralization and Deconcentration
RRD	Rural Road Development
RH	Referral Hospital
RILGP	Rural Investment and Local Governance Project
RPRP	Rural Poverty Reduction Program
RuLIP	Rural Livelihoods Improvement Program
SIDA	Swedish International Development Cooperation Agency
SPPA	Senior Provincial Program Advisor
TBA	Traditional Birth Attendant
UNDP	United Nations Development Project
UNICEF	United Nations Children's Fund
Vil	Village
Vil Cov	Village Covered
VIL-HC	Distance from Village to Health Center
WASH	Water, Sanitation and Hygiene
WRM	Water Resource and Meteorology

Glossary

C/S Fund: The Commune/Sangkat Fund is established and managed by the Government of Cambodia to provide financial support for development projects and administrative costs of Commune/Sangkat Councils. The amount is determined as a percentage of the National Budget (for 2009: 2.8% over the 2008 budget) and is expected to increase gradually over the years. The total 2009 budget under this fund is \$ 27,643,902 (of which \$ 19,272,170 is for Development Projects and \$ 8,371,731 for Administration). Under the Rural Investment and Local Governance Project the World Bank currently reimburses the costs of development projects if these meet the Bank's criteria.

CDB: the Commune Data Base is a national database, compiled by the Ministry of Planning, on the basis of detailed questionnaires, completed at village and commune level, which are then sent to the Departments of Planning for data entry. The most recent round of data collection took place at the end of 2008 (and is reflected in the District Data Books). Commune, District and Provincial Profiles can be generated from this database and should be available from provincial Departments of Planning.

CDPD: the Commune Development and Planning Database is a database maintained by Departments of Planning and Ministry of Planning, recording proposed activities as determined and prioritized by Commune and Sangkat Councils; the Temporary Agreements between these councils and supporting agencies, as decided at District Integration Workshops and details on projects that actually take place at commune, district and provincial levels.

CIP: The Commune Investment Plan is a rolling three-year plan, developed and decided by the Commune or Sangkat Council. It sets priorities and identifies the projects proposed for the years to come.

Commune and Sangkat (C/S): the Communes (in rural areas) and Sangkats (in urban areas) are the lowest and smallest units of local government. Councils are elected directly, once in five years, for the 1417 Communes and 204 Sangkats. In the C/S there are 14,119 villages, which have Village Chiefs, but don't constitute a formal level of local government.

DIP: the District Initiative Project is jointly supported by the MDLF (Multi-Donor Livelihood Facility (supporting the NRM&L Program)) and PSDD. In 2009 it covers 106 districts, 60% of the total in the country, with a budget of \$ 3.2 million. It is focused on capacity development in planning, democratic development, public competitive procurement, financial management and service delivery.

DIS: The District Information System is a national database maintained by NCDD, recording resources, staff, revenue, infrastructure and equipment available in the 193 Districts and Khans throughout the country. The last update took place in July 2009.

District, Municipality and Khan constitutes the third level of Government in Cambodia. There are 159 rural Districts, 26 Municipalities and 8 Khans of Phnom Penh Capital. They all have Councils which were, for the first time, elected in May 2009, by the Commune/Sangkat Councilors. These councils have a mandate for 5 years.

DIW: District Integration Workshops are held between July and October, to bring Commune/Sangkat Councils, looking for support for their projects, together with the governmental and non-governmental agencies that may provide support.

ICC: Inter Communes Council projects are executed in 10 provinces under the Democratic and Decentralized Local Governance Project (DDLG). This five year project (2006-2010) is executed by Ministry of Interior and funded by the European Commission and UNDP. The project focuses on improving dialogue partnership and accountability; create a network of Commune Councils at the provincial and national level and support and contribute to local area development for poverty reduction. The work under the ICC component supports investments and services formulated through inter-commune dialogue and planning.

MEDiCAM: A non-profit and non-partisan membership organization for NGOs active in Cambodia's health sector. It is the primary networking agency for health-related NGOs.

NCDD: the National Committee for sub-National Democratic Development is the inter-ministerial body charged with the implementation of the Organic Law (a key legislative document, adopted in 2008, outlining the envisaged decentralization). NCDD also channels substantial financial assistance by a number of Development Partners, to projects and programs at various levels. This amounted to over \$ 91 million in 2008. More information at: www.ncdd.gov.kh. This website also provides access to reports, manuals, legal documents, details on projects and more.

OD: the Operational Districts are the districts as defined and used by the Ministry of Health. These do not coincide with the 193 (Administrative) Districts and Khans, as used by all other RGC agencies. The Operational Districts are usually larger, and so there are 77 Operational Districts against 193 administrative Districts and Khans. However they do fit within the boundaries of administrative provinces.

PID: The Project Information Database is the database maintained by NCDD at national and sub national level, to follow all aspects of projects by Commune and Sangkat Councils, including the C/S Fund projects

Provincial Investment Fund (PIF)

The Provincial Investment Fund is allocated to all Provinces and Municipalities according to a population based formula. Part of the fund is earmarked for support to planning activities of the Provincial / Municipal Department of Planning; and to gender mainstreaming activities of the Provincial Department of Women's Affairs. The remaining "un-earmarked PIF" is allocated by PRDC to sectoral technical departments against established criteria and in response to proposals with prioritisation taking into account: priorities formulated by the CS Councils and aggregated by District into District Priority Activities Matrices (DPAM); alignment with national planning and poverty alleviation criteria, complementarity with other planned activities; and performance of the Department concerned in implementation of activities in previous years. With this provisional allocation, the Department then programs activities through the District Integration Process. Finally, the agreed activities, plus support costs amounting to no more than 25% of the total, are included in a sub-contract signed between PRDC and the Department, pursuant to the overall PSDD contract signed between NCDD and PRDC. Total budget has been around \$ 2 million per year.

Province: the 23 Provinces and Phnom Penh Capital City represent the 2nd layer of government. They vary in size, from very small, like Kep (approx. 36,000 people) and Pailin (approx. 70,000 people), or large but with small populations, like Mondulkiri (over 60,000 people), and Ratanakiri (over 153,000) to densely populated and large, like Kampong Cham (over 1.7 million people) and Kandal (approx. 1.4 Million people).

PSDD: the Project to Support Democratic Development through Decentralization and Deconcentration is funded by DFID (UK), SIDA (Sweden) and UNDP and runs from 2006 till the end of 2010 (including a one year extension). Annual budgets range from \$ 11 million to over \$ 18 million. The project provides core technical support to NCDD and to the provinces, financial support to the C/S Fund, District Initiative, Provincial Investment Fund and capacity building support through training, studies and advisory services.

RILGP: The Rural Investment and Local Governance Project is a World Bank funded project that provides substantial support to C/S Fund projects and to developing the required infrastructure, policies, systems and skills. It started in 2003 with a Loan for \$ 22 million for 2003-2007 and was then extended with a Grant of \$ 36 million for the period of 2007-2010. Discussions about a possible RILGP 2 are taking place between RGC and the World Bank.

RPRP: the Rural Poverty Reduction Project is a seven year project from 2004 till 2010, funded by IFAD and UNDP and implemented through the Ministry of Agriculture, Forestry and Fishery, supported by the Ministry of Interior and facilitated by NCDD. The project is active in the provinces Prey Veng and Svay Rieng and focuses on 120,600 households below poverty line. The objective is poverty reduction with the active participation of the poor through improved livelihoods, Strengthened capacity, Sustainable farming systems and natural resource management, new and/or rehabilitated infrastructure development, increase accessibly to technology, services and markets for their economic and social development.

RULIP: the Rural Livelihoods Improvement Project is implemented by the Ministry of Agriculture Forestry and Fisheries (MAFF)' Project Support Unit- PSU, with the NCDD playing the role of cooperating agency. Funded by IFAD and UNDP, the project will run till 2014. The target group consists of poor households who have little or even no land, few livestock or other assets and often many dependents. The main goal of the project is to directly or indirectly improve the livelihood systems, food security and incomes of a total of 33,900 rural poor, ethnic minority and female headed households in targeted village of Kratie, Preah Vihear and Ratanakiri provinces in a sustainable manner.

Seth Koma: The UNICEF funded Seth Koma program focuses on measurable action for children and women. During 2006 -2010 it is implemented in six provinces. Government and UNICEF pursue a set of inter-related goals, addressing critical stages of the life cycle of the child: a) Mothers have safe pregnancies and deliveries and healthy newborns; b) best possible start in life of infant; c) Children enter schools at the right age of six years; d) Children are protected from exploitation, abuse, violence, discrimination and other risks; and e) Youth and adolescents acquire life skills, express their views, participate in the decisions.

Preface

The Government of Cambodia attaches great importance to optimal use of scarce resources and to participatory planning and management at all levels. The Organic Law which was adopted in 2008 provides the legal context for further steps towards improving and decentralizing planning, management and monitoring, and towards greater accountability and transparency of institutions at sub-national levels.

The Government has established elected Councils at the sub-national levels, and we will progressively give them the responsibilities, together with the human and financial resources, to deliver a wide range of public services. They will be more democratic, more efficient, more transparent and accountable, better at addressing gender and other inequalities, and at fighting corruption. We recognize that development does not come from government alone; it needs the involvement of citizens, civil society and the private sector, and the new system will facilitate this.

A central element in this process is the availability of information on any aspect of development to all concerned parties. The newly elected Councillors at District and Khan level, line departments operating at these levels, but also NGOs, Development Partners, Commune Councillors and citizens throughout Cambodia need information on problems and requirements, resources and opportunities, services and agencies, plans and projects. They will need such information to better understand the present situation, set targets for the future, monitor progress, know what others are doing and to apply resources wisely and this is the reason the District Data books will be so valuable.

The District Data Books are a major step towards full transparency and towards informed planning and decision-making. They provide all available data at District, Khan, Commune and Sangkat level in easily accessible formats, in Khmer and English, through over 16,000 printed copies, CD-ROMs and the NCDD website.

This is the first time in Cambodia (and possibly in South East Asia) that such detailed information is made so widely available and NCDD should be commended for the hard work that has gone into this. We also thank the Ministry of Planning, which provided the detailed data of the Commune Data Base, the sectoral ministries and provincial authorities who contributed data and the Development Partners who provided financial support.

It is our sincere hope that the publication of the District Data Books will strengthen capacities, especially at district levels, for evidence-based development planning. We also hope that this information will deepen the understanding among Ministries, Provincial Authorities, Development Partners, NGOs and research agencies of the realities at commune and district levels.

We call upon all to use and distribute this information, complement or correct where appropriate and to contribute new data in the years to come.

Sar KHENG

Deputy Prime Minister, Minister of Interior and Chairman of NCDD

Introduction

Purpose

The purpose of the District Data Books is to bring together information on any aspect of life and development of Districts, Khans, Communes and Sangkat, together and make this widely available. The primary targets are the newly elected District Councilors, district level line departments, provincial agencies, Development Partners and NGOs operating at this level. They need detailed knowledge on current living conditions, natural resources, infrastructure, agriculture and other economic activities, current service levels, past and planned projects and available resources.

While much information exists on many of the above aspects, it is often hard to access that information and much is lost to reports, databases and statistics that are not widely shared. Data are often only available in one language and often out-of-date, and many reports cover only one sector or region.

We found that these problems are especially acute at the district level. Now that Districts are becoming a much more significant level of local government and development planning, there is an urgent need for wide-ranging data to be used for setting base-lines, planning and prioritizing, monitoring and learning.

Approach

We have attempted to identify and compile all available statistics, reports, maps and other data at district and/or commune level. From this we have selected information that is available for all or most districts, reasonably reliable and up-to-date, sufficiently detailed and of possible interest to development planners, decision makers, agencies and citizens.

The major sources of the information in these District Data Books are:

- a) The Commune Data Base information over the years 2006 to 2009 (the most recent data were collected late last 2008), as compiled by the Ministry of Planning
- b) Detailed information directly collected from the Ministry of Health, the Ministry of Education, Youth and Sports and (for maps) the Ministry of Land Management, Urban Planning and Construction
- c) The Project Information Database (PID) at NCDD (up-to-date)
- d) The Commune Development and Planning Database (CDPD) (up to date)
- e) The District Information System (DIS) (updated per Mid 2009)
- f) Direct data collection at provincial and district level on private sector, irrigation, roads, and electricity, through provincial agencies
- g) Medical data collected from MEDiCAM
- h) The ID Poor Project – for poverty data on a number of provinces and districts
- i) NCDD's work on predictive poverty rates
- j) Specific projects for outputs, plans and budgets (Seth Koma, RILGP, RPRP and ICC)

Limitations of the data

We are fully aware that the data we collected are not always complete, consistent or correct. While we have rejected information that was wrong or very incomplete, we decided not to aim for statistical and scientific perfection, but to include information that is useful, relevant

and comprehensive. We also accepted different sources for the same data as this may encourage discussion on the quality of the respective data.

We strongly encourage anyone who notes errors or incompleteness in these data to contact us and to share their data. We hope that the next round of producing such District Data Books can draw on wider sources and more complete data.

We encourage the District Administrations, who receive these data also in digital format, not only to use these for their planning and monitoring, but also to start correcting and updating these data and to share new data with NCDD for future use.

Contents

The information in the following pages is organized in five sections:

- a) **Geographical data:** this section provides maps on infrastructure and administration and on land use and natural resources management. These maps are also provided in large format to all Districts and Khans.
- b) **District Profile:** this presents wide ranging data, covering 2006 – 2009, at district and commune level, extracted from the Commune Data Base, but edited for better understanding.
- c) **Plans and Projects:** this section presents development priorities determined by Commune and Sangkat Councils, Temporary Agreements, outputs and expenditure of major projects at Commune and District level over 2006 – 2008 and plans and budgets for 2009.
- d) **Services and Organizations:** this section provides details on key infrastructure (roads, electricity, irrigation systems) and services in health and education at district and commune level. It also provides an inventory of resources at the District Administration, NGOs operating in the district and private sector agencies active in the district.
- e) **Poverty Data:** this section provides predicted poverty rates for 2009 for all districts and communes and detailed poverty data compiled and processed by the ID Poor project for those that have been covered by this project.

The future

It is our hope that this is the start of a longer-term process. We hope that a next edition of these District Data Books will offer more comprehensive, correct and up-to-date information. We hope that the District Administrations will not only start using this information, but also improve and update it. For this they are all provided with the full data set in digital format.

We invite agencies, projects and experts to send reports, statistics and maps that could be used for a next version to us and we invite all users of the District Data Books to inform us about errors, updates and inconsistencies. Please contact us through info@ncdd.gov.kh

We now invite you to browse through this data book. You may open this randomly or use the table of contents and go to the aspects that have your special interest.

We hope that you will be informed, surprised and assisted. We hope, above all, that this information will lead to a deeper understanding of causes and effects of poverty, to purposeful decisions on how to tackle those causes and to greater transparency in using scarce resources for the benefit of all.

Martin de Graaf
Program Advisor, PSDD/NCD

SECTION A: GEOGRAPHY

1 Administration and Infrastructure

Please see separate folder containing A3 maps.

2 Land Use and Natural Resources

Please see separate folder containing A3 maps

3 Geography

3.1 Land Area

Total Land Area (ha)	Forest Land Area (ha)		Cultivation Land Area (ha)	Construction Land Area (ha)	Other Land Area (ha)
	Total	Flooded Forest Area			
485400	327755	0	148870	8775	0

3.2 Distances between Offices

Location	Distance (Km)
From District Office to C/S Office of Ou Saom	45
From District Office to C/S Office of Krapeu Pir	38
From District Office to C/S Office of Anlong Reab	25
From District Office to C/S Office of Pramaoy	0
From District Office to C/S Office of Thma Da	75

SECTION B: DISTRICT PROFILE¹

¹ All data in this section come from the Commune Database (CDB) unless otherwise specified. These include primarily new CDB data, collected late 2008, and some data from earlier years. Please note that percentages are rounded to the nearest whole number.

1 General Information

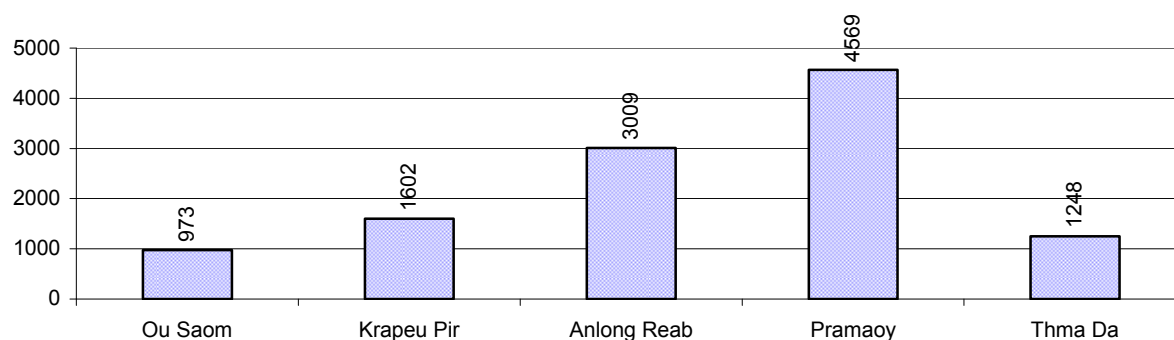
1.1 Population of the District

1.1.1 Total Population

Number of families	2005	2006	2007	2008
Total number of families	1,678 families	1,975 families	2,329 families	2,603 families
Increase (+)/Decrease (-) in nr of families		18%	18%	12%
Total population	7,891 pers	8,898 pers	9,821 pers	11,401 pers
Increase (+)/Decrease (-) in nr of people		13%	10%	16%
Number of female Headed Households (HH)	173 families	222 families	143 families	168 families

Note: Percentages of population and increase/decrease are calculated on basis of the previous year. A negative sign in front of the percentage indicates a decrease in population.

1.1.2 Population, by Commune, in 2008



1.1.3 Population, by Age Group, over 3 years

Population by age group	2006	2007	2008	
	%	%	%	Number
Age 0-5 years (as percentage of the population)	19%	22%	21%	2,412 persons
Male 0-5 yrs	53%	49%	48%	1,155 persons
Female 0-5 yrs	47%	51%	52%	1,257 persons
Age 6-17 (as percentage of the population)	32%	28%	28%	3,201 persons
Male 6-17 yrs	53%	49%	52%	1,652 persons
Female 6-17 yrs	47%	51%	48%	1,549 persons
Age 18-60 (as percentage of the population)	46%	47%	48%	5,438 persons
Male 18-60 yrs	49%	51%	50%	2,714 persons
Female 18-60 yrs	51%	49%	50%	2,724 persons
Age 61 above (as percentage of the population)	3%	3%	3%	350 persons
Male 61	49%	48%	51%	177 persons
Female 61	51%	52%	49%	173 persons

Note: The overall percentage for each age group is calculated on the basis of the total population. The gender distribution of each group is calculated on the basis of the population within that particular age group.

1.2 Occupations

1.2.1 Percentage of families with a particular Occupation over 3 years

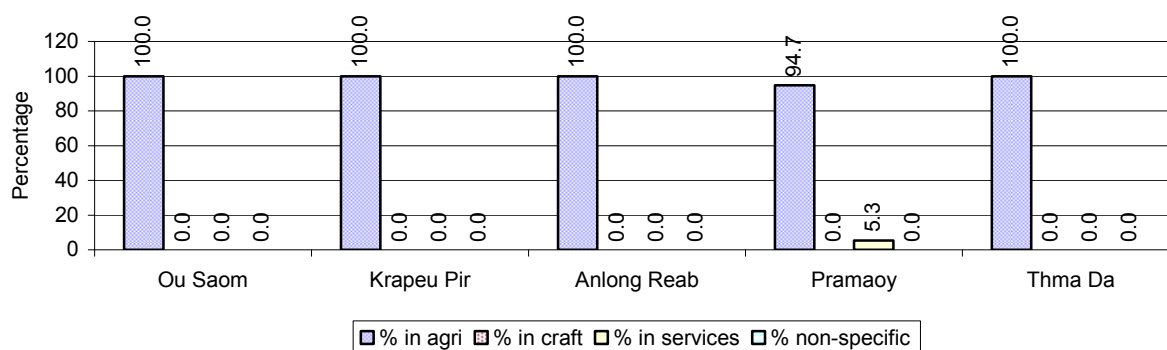
This table shows the percentage of the population who have a particular occupation (job), for example the percentage of the population in the district who are rice farmers, furniture crafter, trader, etc.

Description	2006	2007	2008	
	%	%	%	Number
Families whose main occupation is agriculture	98%	100%	98%	2,549 Families
Families whose primary occupation is rice farming	98%	99%	98%	2,549 Families
Families whose primary occupation is cultivating long-term crops	0%	1%	0%	0 Families
Families whose primary occupation is cultivating short-term crops	0%	0%	0%	0 Families
Families whose primary occupation is cultivating vegetable	0%	0%	0%	0 Families
Families whose primary occupation is fisherman	0%	0%	0%	0 Families
Families whose primary occupation is livestock farmer	0%	0%	0%	0 Families
Families whose primary occupation is NTFP collection	0%	0%	0%	0 Families
Families whose main occupation is craft work	0%	0%	0%	0 Families
Families, whose main occupation is in furniture craft, wooden, rattan, vine, bamboo	0%	0%	0%	0 Families
Families whose main occupation is in metal, aluminum, glass goods production	0%	0%	0%	0 Families
Families whose main occupation is food production	0%	0%	0%	0 Families
Families whose main occupation is tire, plastics and rubber goods production	0%	0%	0%	0 Families
Families whose main occupation is textile, clothing goods production	0%	0%	0%	0 Families
Families whose main occupation is in other production, not listed above	0%	0%	0%	0 Families
Families whose main occupation is services	2%	0%	2%	54 Families
Families whose main occupation is trade	1%	0%	1%	35 Families
Families whose main occupation is repair	0%	0%	0%	9 Families
Families whose main occupation is providing transport services	0%	0%	0%	5 Families
Families whose main occupation is providing other services	0%	0%	0%	5 Families
Families whose main occupation is not clear (or multi)	1%	0%	0%	0 Families

Note: The occupation percentages are calculated on the basis of the total number of families.

1.2.2 Percentage Families that work in one of four occupational sectors, by Commune in 2008

This table indicates the percentage of families involved in one of four occupation types: agriculture, craft, services or non-specific (other). Please note agriculture includes forestry activities such as cutting down trees and gathering gum from the trees.



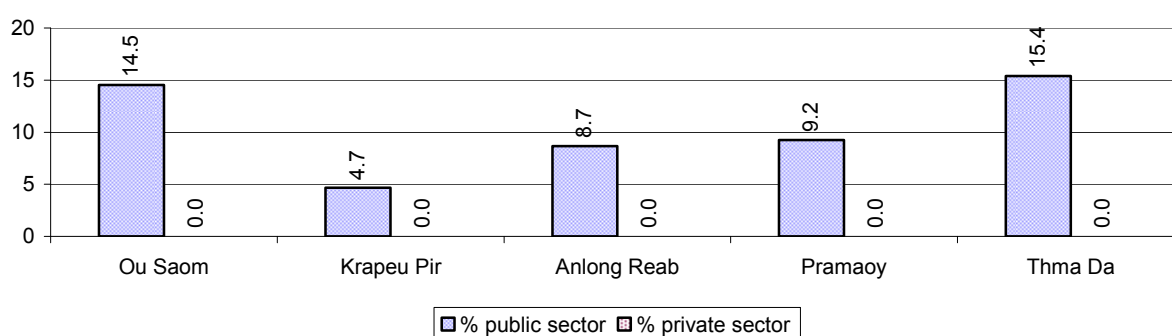
Note: Calculated on the basis of the total number of families within a commune.

1.2.3 Percentage of Families with public Sector, private Sector or uncertain Jobs, over 3 years

Description	2006	2007	2008	
	%	%	%	Number
Families that have a family member who is a government official, staff or worker	20%	10%	10%	253 families
Families that have a family member who is a private sector staff or worker	0%	0%	0%	0 families
Number of people aged 18-60 with uncertain/irregular jobs	0%	0%	0%	0 persons

Note: In the first two rows percentages are calculated on the basis of the total number of families. In the third row the percentage is calculated on the basis of the total number of people aged 18-60 years.

1.2.4 Percentage of Families with public or private Sector Jobs, by Commune in 2008



Note: Calculated on the basis of the total number of families in the commune

1.2.5 Percentage of People aged 18-60 years with uncertain/irregular Jobs, by Commune, in 2008.

There are no people aged 18-60 years with uncertain or irregular jobs in this District in 2008

1.3 Property

1.3.1 Housing types and facilities over 3 years

This table shows the percentage of people living in a certain type of house. It also indicates how many houses have electricity or battery powered lights and how many have TV.

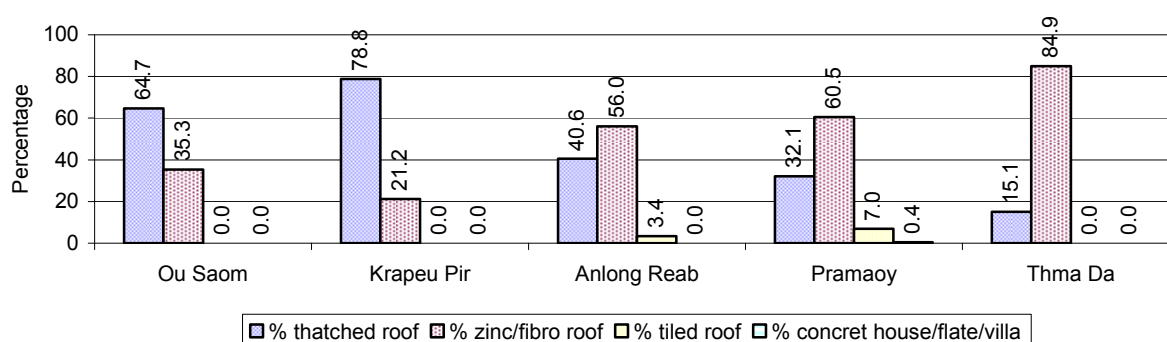
House Type	2006	2007	2008	
	%	%	%	Number
House with thatched roof	60 %	49 %	42 %	1,082 houses
House with zinc/fibro roof	39 %	49 %	55 %	1,419 houses
House with tiled roof	1 %	2 %	4 %	93 houses
Flats/apartments (with many families living)	0 %	0 %	0 %	0 houses
Concrete house or flat (with one family living)	0 %	0 %	0 %	5 houses
Villa house	0 %	0 %	0 %	0 houses
Houses with electricity	6 %	0 %	9 %	240 houses
Houses with battery light	19 %	32 %	32 %	837 houses
Houses with TV	19 %	20 %	32 %	844 houses

Note: Calculated against the total number of houses

1.3.2 Families living on public Land or without a permanent House

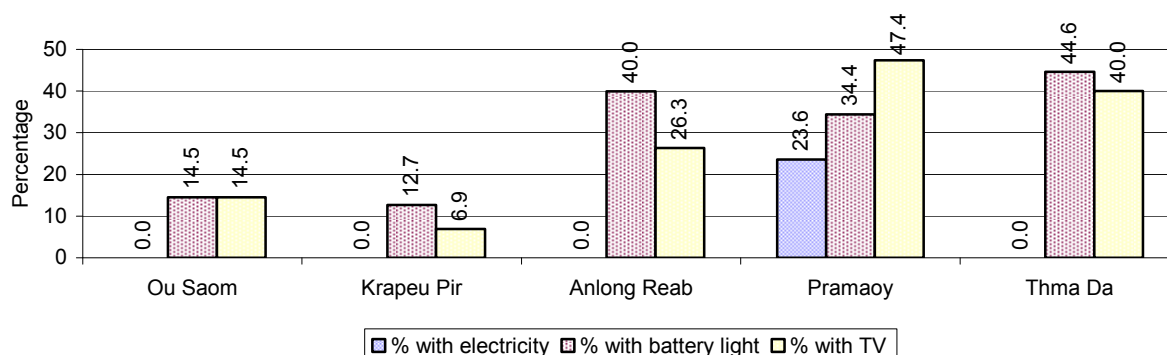
Living situation	2006	2007	2008
Families living in a house on public land	0 families	3 families	13 families
People, without permanent housing	0 person(s)	0 person(s)	0 person(s)

1.3.3 Percentage of Population living in a particular type of House, by Commune, in 2008



Note: Calculated against the total number of houses in each commune

1.3.4 Percentage of Houses with Electricity, Battery Lights and/or TVs, by Commune, in 2008



Note: Calculated against the total number of houses in each commune

1.3.5 Types of Vehicles and their ratio to Families across 3 years

This table shows the number of families per vehicle in the district. The last column shows the total number of each type of vehicle in the district for 2008.

Description	2006 ratio	2007 ratio	2008	
			Ratio	Number
Bicycle and bicycle with trailer	4	3	7	372
Ox-carts and horse-carts	15	12	13	201
Motorbike/with trailer	4	3	2	1,230
Motor tri-cycle	N/A	N/A	N/A	0
Large Transportation				
Total number of cars/trucks	58	42	43	61
Locally made vehicles	329	466	325	8
Trucks for goods transport	99	333	217	12
Buses/mini buses for passengers	1,975	166	N/A	0
Family cars	282	78	63	41
Agriculture machinery				
Tractors used for plowing	494	466	217	12
Power-tillage used for plowing	94	46	22	116
Other type of machinery				
Other type of machinery	658	N/A	N/A	0
Water transportation				
Row boats	658	N/A	N/A	0
Total number of motor boats	N/A	N/A	N/A	0
Motor boats used for fishing	N/A	N/A	N/A	0
Motor boats used for passengers	N/A	N/A	N/A	0
Motor boats used for goods transporting	N/A	N/A	N/A	0

Note: Ratio of families to a particular type of vehicle is the result of the total number of families divided by total number of that type of vehicle. Other types of vehicles, such as bulldozer, excavator, rollers etc. are not listed.

2 Infrastructure and Economy

2.1 Roads in meters over 3 years

Description	2006	2007	2008
Bituminous road	0 m	0 m	0 m
DBST, Macadam road	0 m	0 m	0 m
Concrete road	0 m	0 m	0 m
Laterite road	4,217 m	0 m	4 m
Constructed earth road	0 m	0 m	0 m
Un-constructed earth road	8,174 m	196,200 m	52,150 m

2.2 Sewerage Pipes in meters over 3 years

Description	Sewage pipe length		
	2006	2007	2008
Total length of sewage pipe, diameter 30-50 cm	0 m	0 m	0 m
Length of newly constructed sewage pipe, diameter 30-50 cm	0 m	0 m	0 m
Length of sewage pipe, diameter 30-50 cm needs repair/rehabilitation	0 m	0 m	0 m
Total length of sewage pipe, diameter of pipe 60-100 cm	0 m	0 m	0 m
Length of newly constructed sewage pipe, diameter 60-100 cm	0 m	0 m	0 m
Length of sewage pipe, diameter 60-100 cm needs repair/rehabilitation	0 m	0 m	0 m
Sewage pipe, diameter of pipe over 100 cm	0 m	0 m	12 m
Length of newly constructed sewage pipe, diameter over 100 cm	0 m	0 m	0 m
Length of sewage pipe, diameter over 100 cm needs repair/rehabilitation	0 m	0 m	0 m

2.3 Drainage and Bridges

Construction Type	2006		2007		2008	
	place(s)	Length	place(s)	Length	place(s)	Length
Single pipe culvert	8	47m	7	35 m	24	120 m
Double-pipe culvert	10	51m	10	100 m	3	30 m
Box pipe culvert	1	6m	5	25m	0	0 m
Wooden bridge	2	35m	4	48m	8	44 m
Concrete bridge	0	0m	0	0m	0	0 m
Bale bridge	0	0m	0	0m	0	0 m
Spillway construction	0	0m	0	0m	1	20 m

2.4 Services in the District

Descriptions	Number of places by year		
	2006	2007	2008
Public			
Electricity generating stations	1	1	1
Health clinics	0	0	0
Private			
Bicycle and motorcycle repair places	9	7	11
Agricultural machinery, tools and equipment repair places	0	0	0
Electronic tool repair places	0	0	0
Battery-charging services	12	12	18
Handicraft places, wooden furniture and forest by-products	0	0	0
Other handicraft places (excluding furniture)	0	0	0
Small-scale services (hairstylist, phone service, massage,	15	8	11

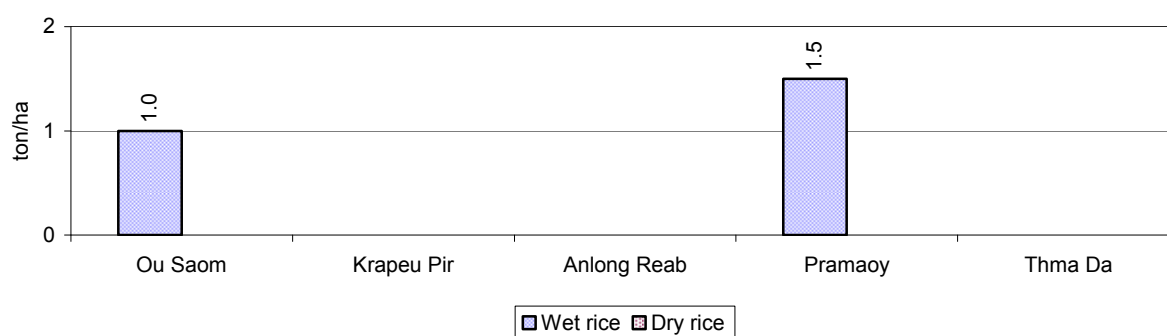
Descriptions	Number of places by year		
	2006	2007	2008
Karaoke, etc)			
Small-scale food shop businesses (Food, groceries, drink shop, etc)	1	3	6
Small-scale rice mills	19	43	48
Medium or large-scale rice mills	0	0	0
Small-scale markets	1	2	2
Large-scale market	0	0	0
Alcohol refinery places	13	5	5
Pharmacies and small drug stores	1	3	1
Hotels	0	0	0
Guest houses	6	3	6
Restaurants	0	4	0
Gasoline stations	0	0	0

2.5 Agriculture

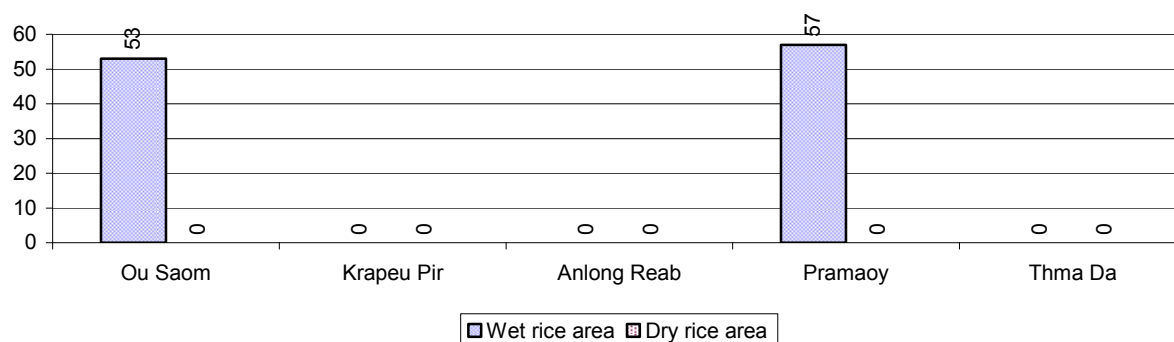
2.5.1 Rice cultivation in the District over 3 years

Description	2006	2007	2008
Total dry rice land area	0 ha	0 ha	0 ha
Actual dry rice cultivation area	0 ha	0 ha	0 ha
% actual cultivation to total land	-%	-%	-%
Total dry rice production	- tonne(s)	- tonne(s)	- tonne(s)
Average dry rice yield	- tonne(s)/ha	- tonne(s)/ha	- tonne(s)/ha
Total wet rice land area	0 ha	20,400 ha	10,068 ha
Actual wet rice cultivation area	0 ha	2,448 ha	110 ha
% actual cultivation to total land	- %	12%	1%
Total wet rice production	- tonne(s)	3,590.40 tonne(s)	137.50 tonne(s)
Average wet rice yield	- tonne(s)/ha	1.5 tonne(s)/ha	1.3 tonne(s)/ha
Total intensive rice land area	0 ha	0 ha	0 ha
Actual intensive rice cultivation area	- ha	- ha	- ha
Average intensive rice yield	- tonne(s)/ha	- tonne(s)/ha	- tonne(s)/ha
Actual upland rice cultivation area	1,768 ha	2,557 ha	2,729 ha
Total upland rice production	1,945 tonne(s)	2,046 tonne(s)	2,729 tonne(s)
Average upland rice yield	1.1 tonne(s)/ha	0.8 tonne(s)/ha	1.0 tonne(s)/ha

2.5.2 Estimated wet and dry Season Rice Yield in tonne(s)/Ha, by Commune, in 2008



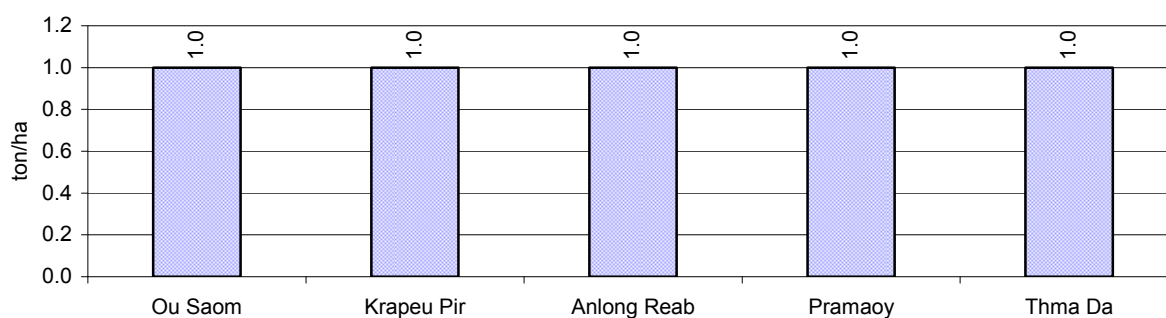
2.5.3 Cultivated wet and dry Season Rice areas in Ha, by Commune, in 2008



2.5.4 Estimated intensive Rice Yields in tonnes/Ha, by Commune, for 2008

There were no estimated intensive rice yields in this District in 2008

2.5.5 Estimated upland Rice Yield in tonnes/Ha, by Commune, for 2008

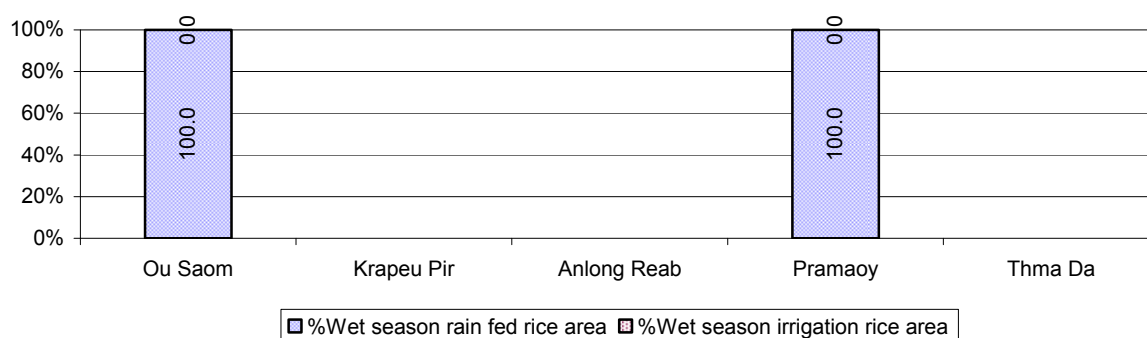


2.5.6 Wet season Rice irrigation across 3 years

Description		2006	2007	2008	
		%	%	%	Number
Total area of wet season rain fed rice land		- %	92 %	100 %	110 ha
Percentage of wet season rice land that is irrigated; and for 2008 area in Ha		- %	8 %	0 %	0 ha
Where	Area irrigated from canal/dam	- %	100 %	- %	0 ha
	Area irrigated from river, stream, lake, natural pond	- %	0 %	- %	0 ha
	Area irrigated from drilled well	- %	0 %	- %	0 ha
	Area irrigated from dug pond	- %	0 %	- %	0 ha

2.5.7 Water sources for wet Season Rice Cultivation, by Commune, in 2008

This chart shows the percentage of wet season rice cultivation receiving water from rain (natural) and from irrigation.



2.5.8 Access to Irrigation

Description	2006	2007	2008	
	%	%	%	Number
Families who have access to irrigation water	0%	0%	0%	0 families
Families who have irrigation wells	0%	0%	0%	0 families

Note: Calculated against the total number of families are rice farmers

2.5.9 Number of Irrigation Wells over 3 years

Description	2006	2007	2008
Number of irrigation wells	0 wells	0 wells	0 wells

2.5.10 Percentage of Families with access to (supplemental) Irrigation for wet Season Rice cultivation, by Commune, in 2008

There are no families with access to supplemental irrigation for wet season rice irrigation in this District in 2008

Note: % of families, with access to irrigation is calculated against the total number of families, whose main occupation is rice farming. Irrigated wet rice land area is calculated against the total actual wet rice land cultivated areas

2.5.11 Irrigation Wells, by Commune, in 2008

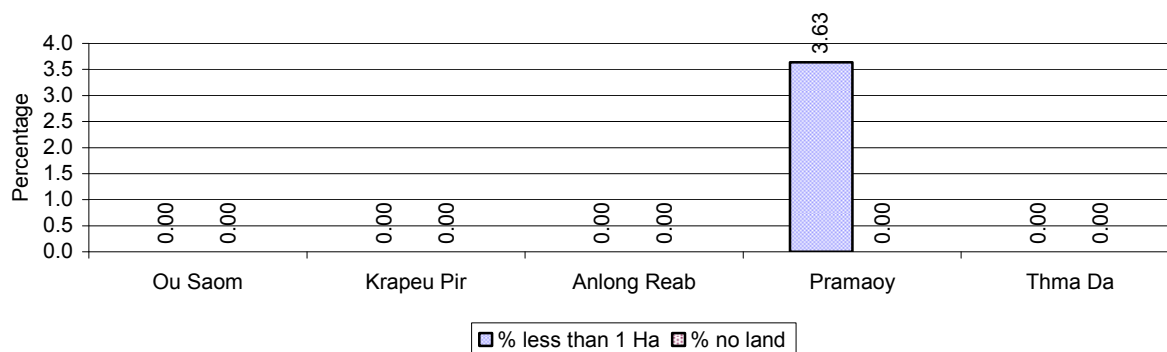
There are no irrigations wells in this District in 2008

2.5.12 Farmers owning less than one hectare of Rice Land

Description	2006	2007	2008	
	%	%	%	Number
Families who have less than one hectare of rice land	1%	1%	1%	35 families
Families who do not own any rice land	0%	21%	0%	0 families

Note: Calculated on basis of total number of families who are rice farming

2.5.13 Percentage of Farmers with less than one Hectare or no Rice Land, by Commune, in 2008

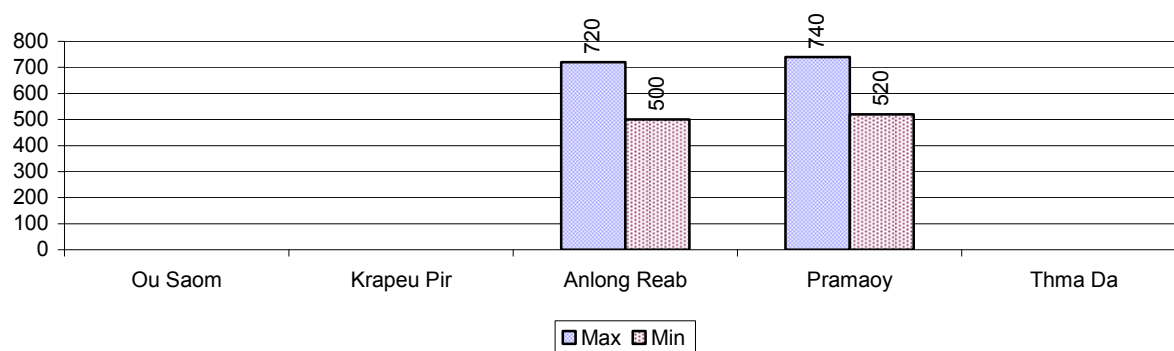


Note: Calculated on basis of total number of families who are rice farming

2.5.14 Average farm-gate Prices of Rice, over 3 years

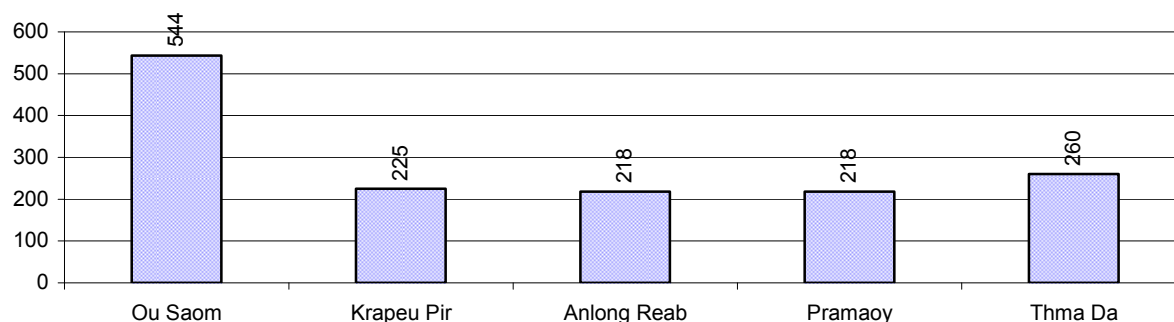
Description	2006	2007	2008
Maximum average farm gate price	483 Riels/Kg	639 Riels/Kg	730 Riels/Kg
Minimum average farm gate price	372 Riels/Kg	522 Riels/Kg	510 Riels/Kg
Average farm gate price	428 Riels/Kg	581 Riels/Kg	620 Riels/Kg
Average rice production per person	219 Kg/person	574 Kg/person	251 Kg/person

2.5.15 Minimum and maximum farm-gate Prices of Rice in Riel/kg, by Commune, in 2008



2.5.16 Production of Paddy in Kgs/Person, by Commune, in 2008

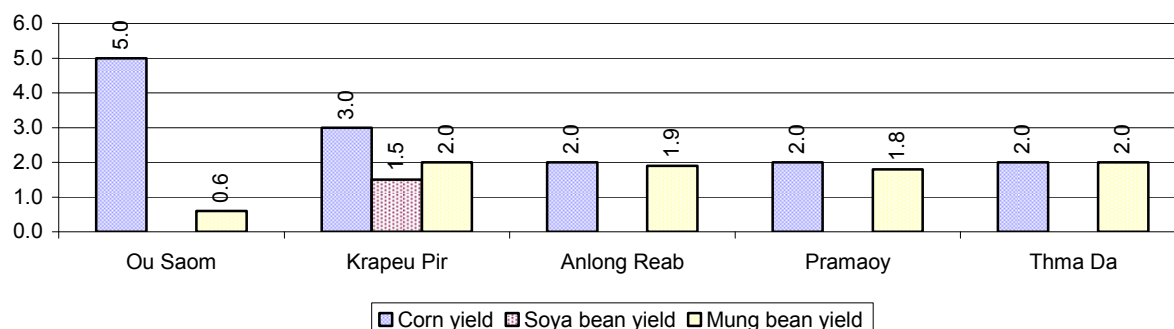
This table shows how much paddy (harvested rice) is produced in a year in a commune, in kgs per person.



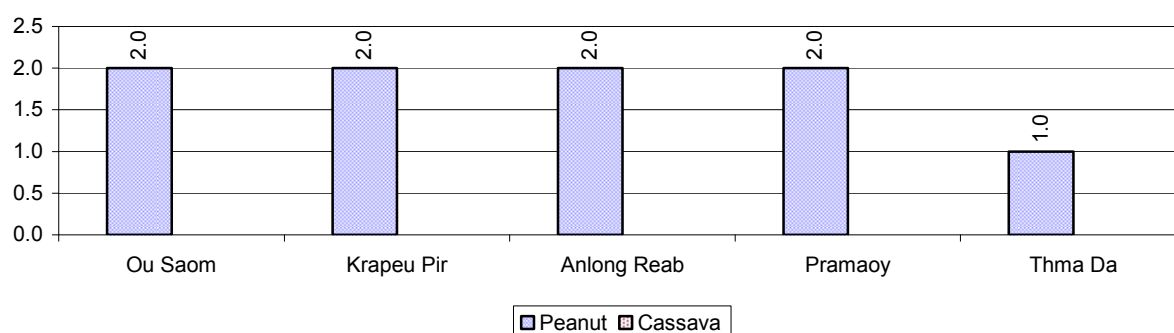
2.5.17 Production of other Crops, over 3 years

Crops	2006	2007	2008
Corn cultivation area	47 ha	78 ha	223 ha
Estimated corn yield	1.0 tonne(s)/ha	3.0 tonne(s)/ha	2.8 tonne(s)/ha
Estimated corn production	47 tonne(s)	234 tonne(s)	624 tonne(s)
Soya bean cultivation area	20 ha	5 ha	4 ha
Estimated Soya bean yield	1.0 tonne(s)/ha	2.0 tonne(s)/ha	1.5 tonne(s)/ha
Estimated Soya bean production	20 tonne(s)	10 tonne(s)	6 tonne(s)
Mungbean cultivation area	44 ha	17 ha	57 ha
Estimated Mungbean yield	0.8 tonne(s)/ha	1.3 tonne(s)/ha	1.7 tonne(s)/ha
Estimated Mungbean production	33 tonne(s)	21 tonne(s)	95 tonne(s)
Peanut cultivation area	19 ha	12 ha	59 ha
Estimated Peanut yield	0.6 tonne(s)/ha	1.8 tonne(s)/ha	1.8 tonne(s)/ha
Estimated Peanut production	12 tonne(s)	21 tonne(s)	106 tonne(s)
Cassava cultivation area	3 ha	0 ha	0 ha
Estimated Cassava yield	4.0 tonne(s)/ha	- tonne(s)/ha	- tonne(s)/ha
Estimated Cassava production	12 tonne(s)	- tonne(s)	- tonne(s)
Sweet potatoes cultivation area	7 ha	3 ha	0 ha
Estimated Sweet potatoes yield	1.5 tonne(s)/ha	1.5 tonne(s)/ha	- tonne(s)/ha
Estimated Sweet potatoes production	11 tonne(s)	5 tonne(s)	- tonne(s)
Sesame cultivation area	223 ha	72 ha	0 ha
Estimated Sesame yield	2.5 tonne(s)/ha	1.3 tonne(s)/ha	- tonne(s)/ha
Estimated Sesame production	558 tonne(s)	96 tonne(s)	- tonne(s)

2.5.18 Yields of Corn, Soya beans and Mungbeans in tonne(s)/ha, by Commune, in 2008



2.5.19 Yields of Peanuts and Cassava in tonne(s)/ha by Commune, in 2008



2.5.20 Yields of Sweet Potatoes and Sesame in tonne(s)/ha, by Commune, in 2008

There were no yields for any of these crops in this District in 2008

2.5.21 Percentage Farmers who own less than 1 Ha or no Chamkar land

Description	2006 %	2007 %	2008	
			%	Number
Families, who own less than 1ha of Chamkar land	-%	20%	-%	0 families
Families, with no Chamkar land	-%	0%	-%	0 families

Note 1: Calculated as a percentage of the total number of families whose main occupation is Chamkar (not rice) farming

Note 2: Chamkar land is no-rice land, i.e. other crops

2.5.22 Percentage Farmers owning less than 1 ha or no Chamkar land, by Commune, in 2008

There were no Farmers owning less than 1 ha or no Chamkar land in this District in 2008

Note: Percentage is calculated among families, who Chamkar farm as a main occupation, not the total population of the commune.

2.5.23 Percentage of Families raising Cattle/Buffalo, over 3 years

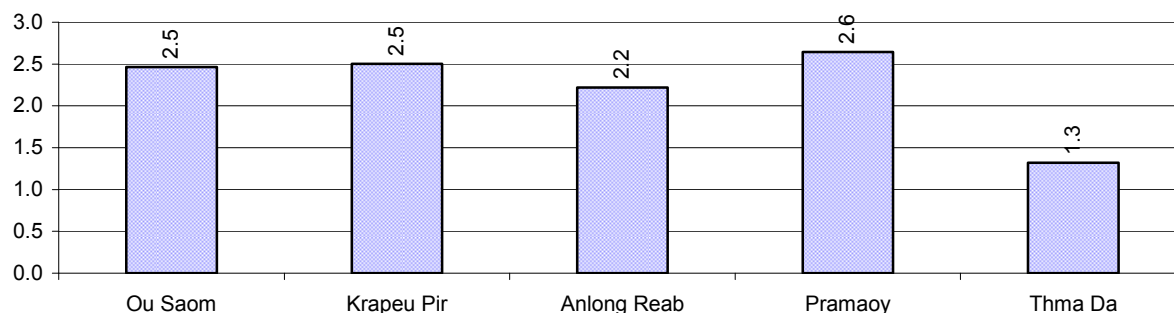
Description	2006 %	2007 %	2008	
			%	Number
Families raising cattle/buffalo	33%	49%	55%	1,438 families
Families raising cattle/buffalo as labor forces	9%	13%	10%	248 families

Note: Calculated against the total number of families.

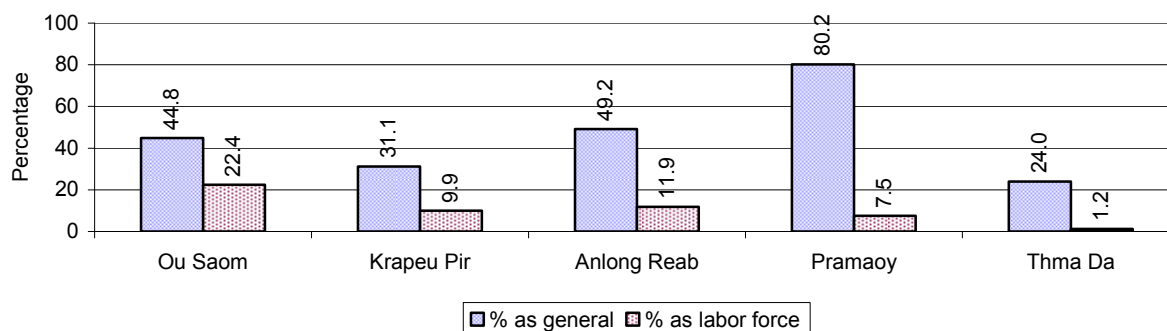
2.5.24 Number of Cattle/buffalo being raised, over 3 years

Description	2006	2007	2008
Total number of cattle/buffalo	1,871 head(s)	2,124 head(s)	3,526 head(s)
Average cattle/buffalo per families	2.9 head(s)/families	1.8 head(s)/families	2 head(s)/families

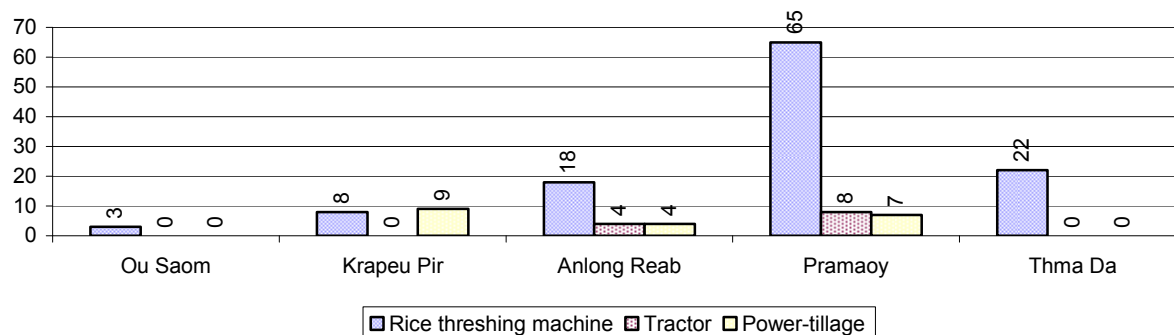
Note: Calculated by dividing total number of cattle/buffalo by total number of cattle/buffalo raising families

2.5.25 Average number of Cattle/Buffalo per Family, by Commune, in 2008

Note: Calculated by dividing total number of cattle/buffalo by total number of cattle/buffalo raising families

2.5.26 Percentage Families raising Cattle/Buffalo, for general and labor purposes in 2008, by Commune

Note: Calculated using the total number of families raising cattle/buffalo against the total number of families.

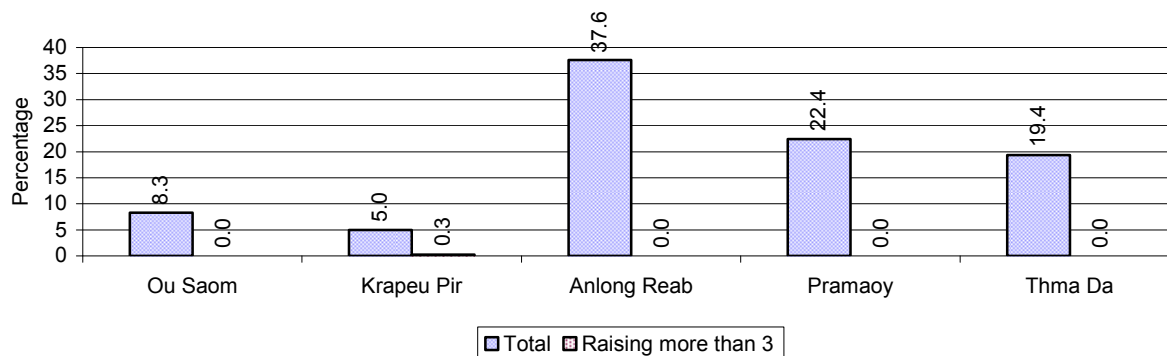
2.5.27 Type and number of agricultural Machines, by Commune, in 2008

2.5.28 Livestock-producing Households over 3 years

Description	2006 %	2007 %	2008	
			%	Number
Total number of families raising pigs	27%	22%	22%	576 families
number of families raising more than 3 pigs	3%	0%	0%	1 families
Total number of families raising chickens	83%	26%	92%	2,399 families
number of families raising more than 3 chickens	17%	4%	7%	181 families
Total number of families raising ducks	2%	2%	8%	218 families
number of families raising more than 5 ducks	1%	0%	0%	0 families
Total number of families raising goats or sheep	0%	0%	0%	0 families
Total number of families raising horses	0%	0%	0%	1 families

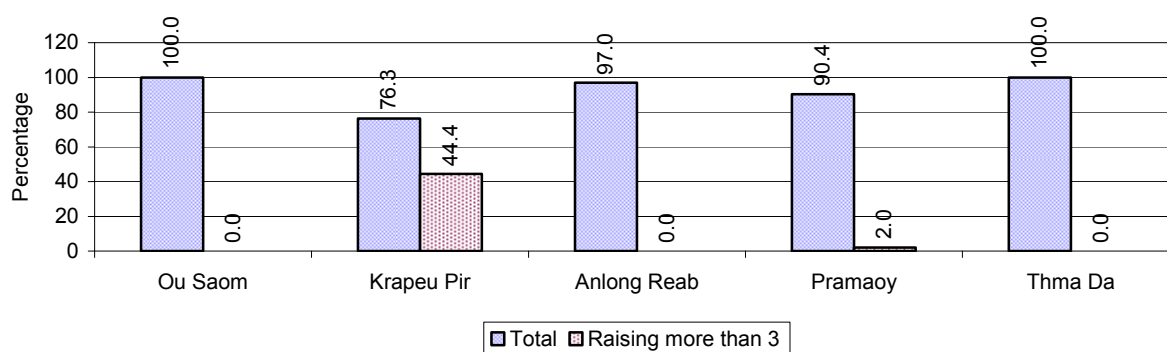
Note: Calculated against the total number of families

2.5.29 Percentage Families raising Pigs, by Commune, in 2008



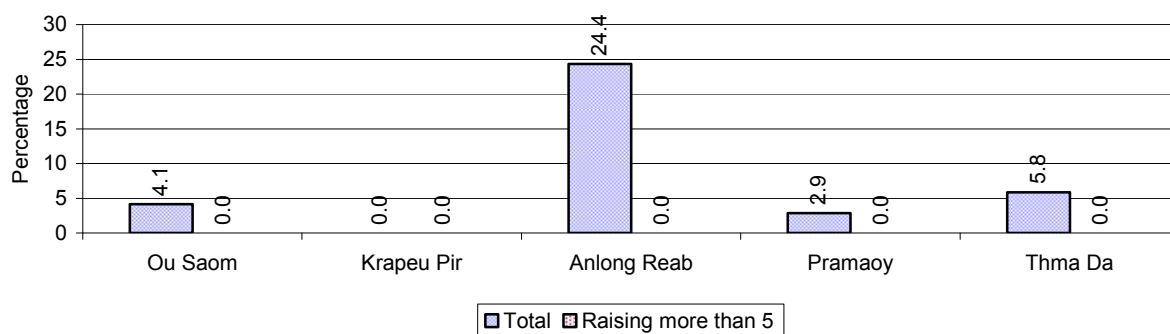
Note: Calculated against the total number of families in the commune

2.5.30 Percentage Families raising Chickens, by Commune, in 2008



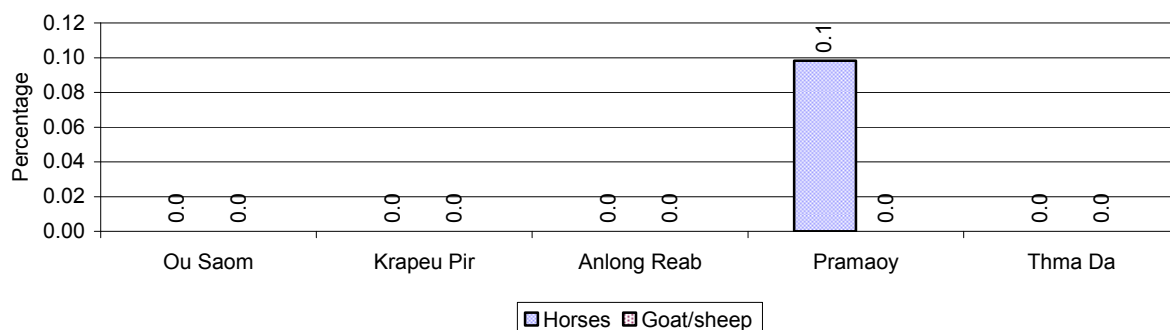
Note: Calculated against the total number of families in the commune

2.5.31 Percentage Families raising Ducks, by Commune, in 2008



Note: Calculated against the total number of families in the commune

2.5.32 Percentage Families raising Horses, Goats or Sheep, by Commune, in 2008

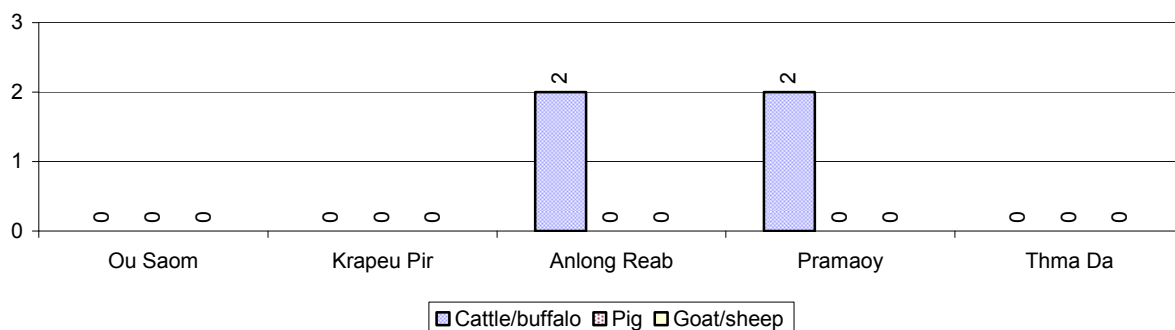


Note: Calculated against the total number of families in the commune

2.5.33 Livestock Farms over 3 years

Description	2006	2007	2008
Number of cattle/buffalo farms	0 farm(s)	0 farm(s)	4 farm(s)
Number of pig farms	0 farm(s)	0 farm(s)	0 farm(s)
Number of goat/sheep farms	0 farm(s)	0 farm(s)	0 farm(s)
Number of chicken farms	0 farm(s)	0 farm(s)	0 farm(s)
Number of duck farms	0 farm(s)	0 farm(s)	0 farm(s)

2.5.34 Number Livestock Farms, by Commune in 2008



Note: Number of farms are recorded by the village chief, not by counting number of livestock in each farm

2.5.35 Number Chicken and Duck Farms, by Commune, for 2008

There were no farms of this type in this District in 2008

Note: Number of farm places recorded by village chief, not by counting number of livestock in each farm

2.5.36 Families raising Fish over 3 years

Description	2006	2007	2008
Total number of families raising fish	3 families	0 families	0 families
% families raising fish	0%	0%	0%
Number families raising fish in pond	3 families	0 families	0 families
% families raising fish in pond	0%	0 %	0%
Number fish pond	3 pond(s)	0 pond(s)	0 pond(s)
No. of ponds per family	1.0 pond/families	- pond/families	- pond/families
Number of families raising fish in cage	0 families	0 families	0 families
%families raising fish in cage	0 %	0 %	0%
Number of fish cage	0 cage(s)	0 cage(s)	0 cage(s)
No. of fish cage per family	- cage /families	- cage /families	- cage /families

Note: % of families raising fish or fish in ponds or cages is calculated a percentage of the total number of families.

2.5.37 Percentage of Families raising Fish, by Commune, in 2008

There were no families raising fish in this District in 2008

Note: Calculated as a percentage of the total number of families in the commune.

2.5.38 Shrimp and Prawn Farming over 3 years

Description	2006	2007	2008
Number of families raising shrimps	0 families	0 families	0 families
% Families raising shrimps	0%	0%	0%
Number of shrimp ponds	0 pond	0 pond	0 pond
Total area raising shrimps	0 ha	0 ha	0 ha
Area per family	-ha/families	-ha/families	-ha/families
Number of families raising prawns	0 families	0 families	0 families
% families raising prawns	0%	0%	0%
Number prawn ponds	0 pond	0 pond	0 pond
Ponds per families	- pond/families	-pond/families	-pond/families
Number of prawn cages	0 cage	0 cage	0 cage
Cages per families	0 cage /families	0 cage /families	0 cage /families

Note: Percentage of families raising either prawns or shrimp is calculated against the number of families, who do aquaculture farming, NOT the total population.

2.5.39 Numbers of Families raising Shrimps and number of Shrimp Ponds, by Commune, in 2008

There were none of these in this District in 2008

2.5.40 Number of Families raising Prawn and Number of Prawn Ponds/Cages, by Commune, in 2008

There were none of these in this District in 2008

3 Social Aspects

3.1 Education

3.1.1 Kindergarten in the District over 3 years

Description	2006	2007	2008
Number of community kindergarten schools	0 school(s)	0 school(s)	0 school(s)
Number of community kindergarten class rooms	0 room(s)	0 room(s)	0 room(s)
Number of community kindergarten classes	0 class(es)	0 class(es)	0 class(es)
Number of community kindergarten teachers	0 person(s)	0 person(s)	0 person(s)
Number of women community kindergarten teachers	0 women	0 women	0 women
Number of state and private kindergarten schools	0 school(s)	0 school(s)	0 school(s)
Number of state and private kindergarten class rooms	0 room(s)	0 room(s)	0 room(s)
Number of state and private kindergarten classes	0 class(es)	0 class(es)	0 class(es)
Number of state and private kindergarten teachers	0 person(s)	0 person(s)	0 person(s)
Number of women state and private kindergarten teachers	0 women	0 women	0 women

3.1.2 Percentage enrolment at Kindergarten level over 3 years

This table shows the percentage of the total 3-5 year old population attending kindergarten.

Description	2006 %	2007 %	2008	
			%	Number
Total percentage of children, 3-5 yrs, go to kindergarten	0%	0%	0%	0 person(s)
Percentage of children, 3-5 yrs, go community kindergarten	0%	0%	0%	0 person(s)
Percentage children, 3-5 yrs, go state/private kindergarten	0%	0%	0%	0 person(s)

Note: Calculated against the total for that age group

3.1.3 Percentage of Children 3-5 yrs attending Kindergarten, by Commune, in 2008

There were no children 3-5 yrs attending kindergarten in this District in 2008

3.1.4 Basic Education over 3 years

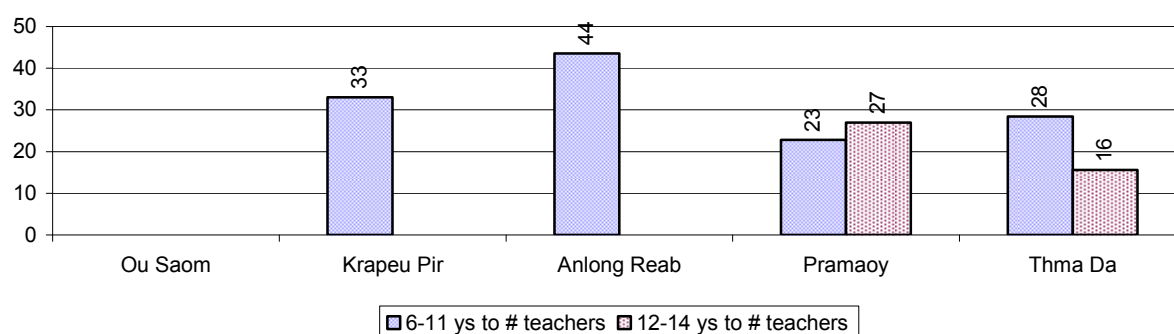
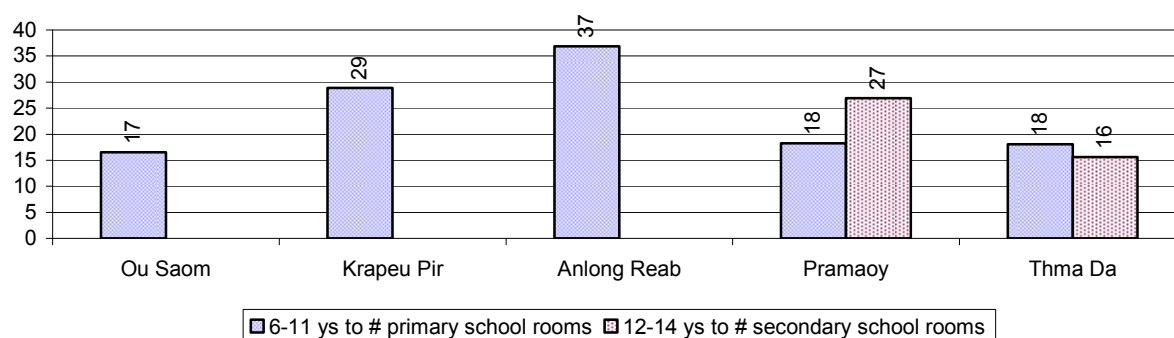
Primary School

Description	2006	2007	2008
Number of primary schools	16 school(s)	16 school(s)	33 school(s)
Number of primary school rooms	55 room(s)	50 room(s)	70 room(s)
Number of primary classes	73 class(es)	66 class(es)	106 class(es)
Number of primary teachers	46 person(s)	46 person(s)	49 person(s)
Ratio of children 6-11 yrs to school	95	96	48
Ratio of children 6-11 yrs to school room	28	31	23
Ratio of children 6-11 yrs to class	21	23	15
Ratio of children 6-11 yrs to teacher	33	33	32

Note: According to education norm, children 6-11 yrs should attend primary school, while 12-14 yrs should be in lower secondary school, but in reality this varies.

Lower Secondary School

Description	2006	2007	2008
Number of lower secondary schools	2 school(s)	2 school(s)	4 school(s)
Number of lower secondary school rooms	10 room(s)	6 room(s)	20 room(s)
Number of lower secondary classes	5 class(es)	5 class(es)	10 class(es)
Number of lower secondary teachers	7 person(s)	6 person(s)	20 person(s)
Ratio children 12-14 yrs to school	364	375	230
Ratio of children 12-14 yrs to school room	73	125	46
Ratio of children 12-14 yrs to class	146	150	92
Ratio of children 12-14 yrs to teacher	104	125	46

3.1.5 Ratio of 6-11 year old and 12-14 year old Children to number of Teachers, by Commune, in 2008**3.1.6 Ratio of 6-11 year old and 12-14 year old Children to number of School Rooms, by Commune, in 2008**

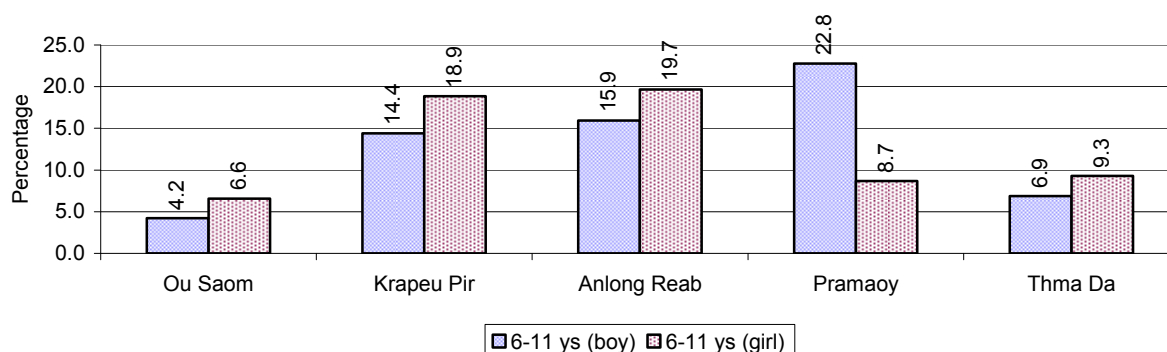
3.1.7 Enrolment status at Primary Level over 3 years

Description	2006 %	2007 %	2008	
			%	Number
Total children aged 6-11 years old	17%	16%	14%	1,588 person(s)
Total children aged 6-11 who are in school	88%	76%	85%	1,353 person(s)
Total children aged 6-11 who are not in school	12%	24%	15%	235 person(s)
Total girls aged 6-11 years old	17%	16%	13%	751 person(s)
Total girls aged 6-11 who are in school	87%	70%	87%	650 person(s)
Total girls aged 6-11 who are not in school	13%	30%	13%	101 person(s)
Total boys aged 6-11 years old	17%	15%	15%	837 person(s)
Total boys aged 6-11 who are in school	89%	82%	84%	703 person(s)
Total boys aged 6-11 who are not in school	11%	18%	16%	134 person(s)

Note 1: Percentage is calculated on the basis of the total number of children within 6-11 year age group for the first 3 rows and for the total girls and the total boys aged 6-11 yrs.

Note 2: Number of girls aged 6-11 who are in & not in school is calculated against the total number of girls aged 6-11 yrs. Number boys, 6-11 yrs who are in & not in school are calculated against the total number of boys aged 6-11 yrs.

3.1.8 Percentage of 6-11 year old Children not in School, by Commune, in 2008



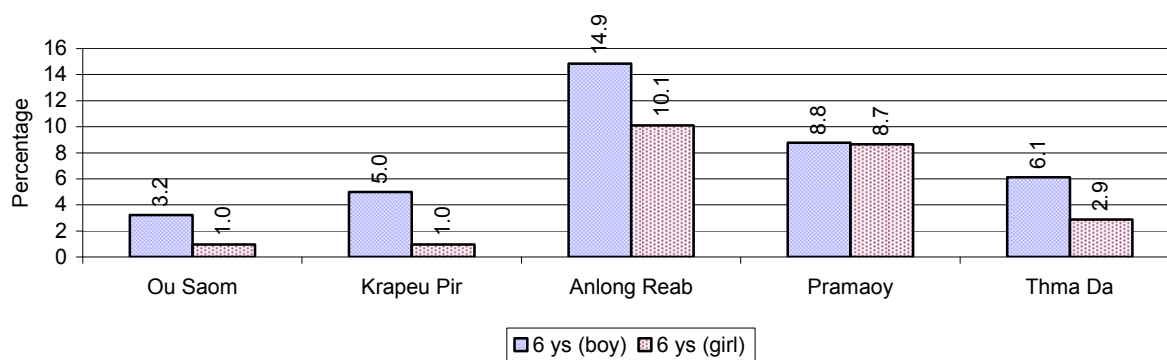
Note: calculated on the basis of the total number of children within 6-11 year age group in the commune.

3.1.9 Enrolment of 6 year old Children over 3 years

Description	2006 %	2007 %	2008	
			%	Number
Total % and number of children aged 6 years old	5%	6%	6%	686 person(s)
Total % of children aged 6 years old in school	79%	75%	88%	606 person(s)
Total % of children aged 6 years old not in school	21%	25%	12%	80 person(s)

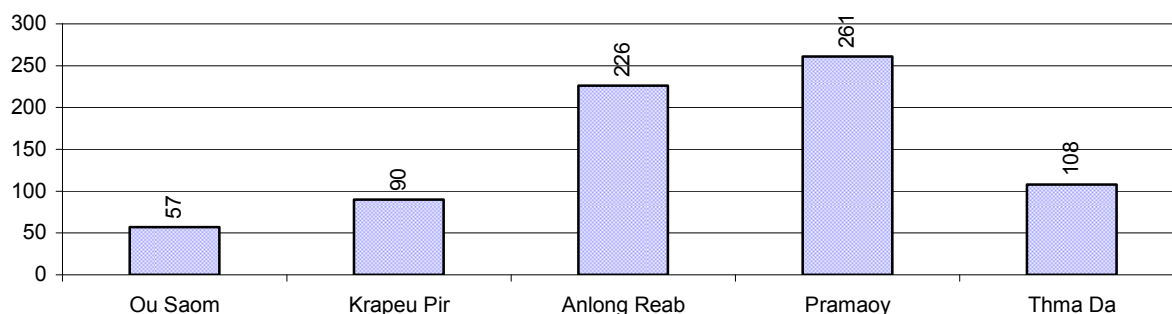
Note: First row calculated as a percentage of total population. Second and third row calculated as a percentage of the total number of 6 year olds.

3.1.10 Percentage of 6 year old Children not in School, by Commune, in 2008



Note: Calculated as a percentage of total 6 year old population

3.1.11 Number of 5 year old Children in each Commune in 2008

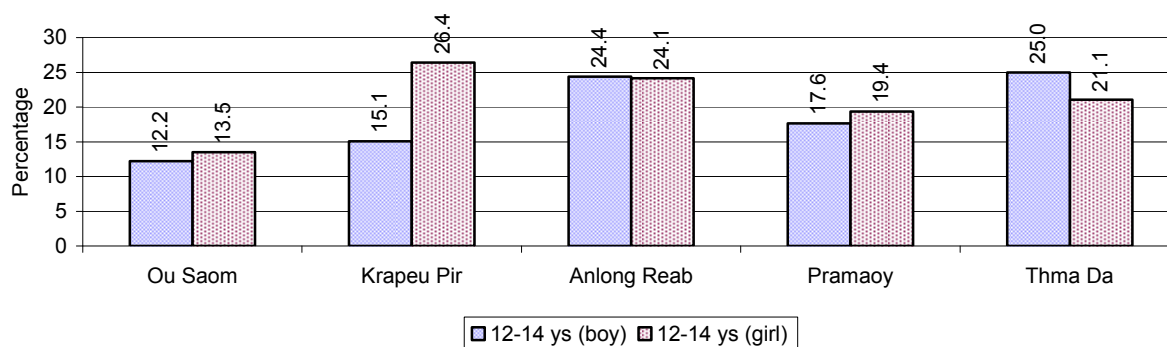


3.1.12 Enrolment at Lower Secondary Level over 3 years

Description	2006 %	2007 %	2008	
			%	Number
Total children aged 12-14 years old	8%	8%	8%	921 person(s)
Children aged 12-14 years old in school	82%	75%	80%	736 person(s)
Children aged 12-14 years old not in school	18%	25%	20%	185 person(s)
Total girls aged 12-14 years old	8%	7%	8%	461 person(s)
Girls aged 12-14 years old in school	78%	76%	79%	364 person(s)
Girls aged 12-14 years old not in school	22%	24%	21%	97 person(s)
Total boys aged 12-14 years old	9%	8%	8%	460 person(s)
Boys aged 12-14 years old in school	85%	74%	81%	372 person(s)
Boys aged 12-14 years old not in school	15%	26%	19%	88 person(s)

Note: Percentage is calculated on the basis of number of the total number of children within 12-14 yrs group, except for the first row of each section which is calculated on the basis of the total population.

3.1.13 Percentage of 12-14 year olds not in School, by Commune, in 2008



Note: Calculated as a percentage of the total 12-14 year old population in each commune

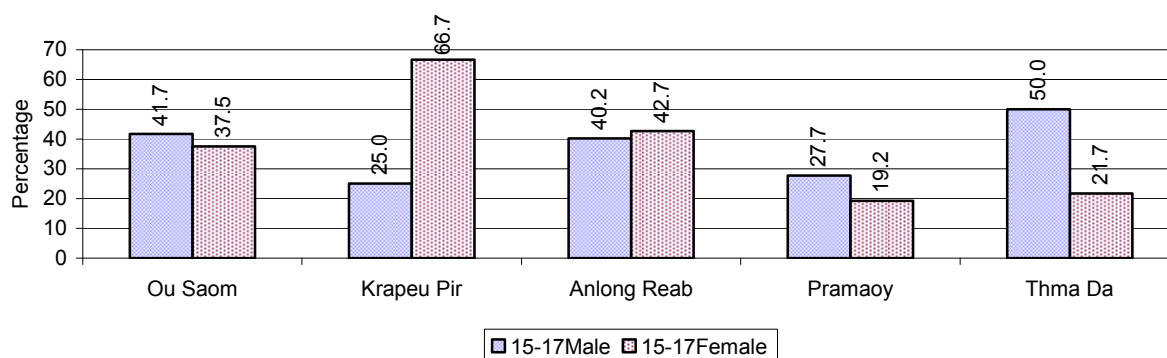
3.1.14 Upper Secondary Schools over 3 years

Description	2006	2007	2008
Number of upper secondary schools	0 school(s)	0 school(s)	1 school(s)
Number of upper secondary school rooms	0 room(s)	0 room(s)	3 room(s)
Number of upper secondary classes	0 class(es)	0 class(es)	2 class(es)
Number of upper secondary teachers	0 person(s)	0 person(s)	0 person(s)
Ratio of 15-17 yr olds to number of school	N/A	N/A	692
Ratio of 15-17 yr olds to number of school room	N/A	N/A	231
Ratio of 15-17 yr olds to number of classes	N/A	N/A	346
Ratio of 15-17 yr olds to number of teacher	N/A	N/A	N/A

3.1.15 Enrolment of 15-17 year old teenagers over 3 years

Description	2006	2007	2008
Number of teenage, 15-17 years old	615 person(s)	519 person(s)	692 person(s)
Number of teenage, 15-17 years old, who are not studying	240 person(s)	191 person(s)	230 person(s)
Percentage of teenage, 15-17 years old not studying	39%	37%	33%

3.1.16 Percentage of 15-17 year old Teenagers not at School, by Commune, in 2008



3.1.17 Literacy Classes as of 2008

Literacy classes	Organized by:		Other Program(s)	Total
	PDoEYS	NGOs		
Number of On-going literacy classes	0 class(es)	0 class(es)	0 class(es)	0 class(es)
Number of literacy students in on-going classes	0 person(s)	0 person(s)	0 person(s)	0 person(s)
Completed literacy class(es)	0 classes	0 classes	0 classes	0 classes
Number of literacy students that have completed literacy classes	0 person(s)	0 person(s)	0 person(s)	0 person(s)
Number of students that passed	0 person(s)	0 person(s)	0 person(s)	0 person(s)

3.1.18 Number of on-going and completed Literacy Classes, by Commune, in 2008

There were no classes in this District in 2008

3.1.19 Students of on-going & completed Literacy Classes, by Commune, in 2008

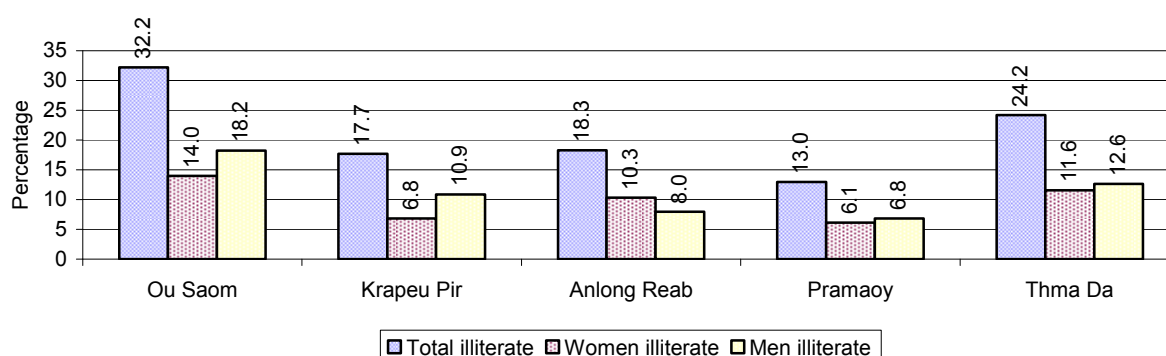
There were no students who had taken or were taking literacy classes in this District in 2008

3.1.20 Percentage of illiterate People between 15-60, over 3 years

Illiteracy Status	2006 %	2007 %	2008	
			%	Number
Illiterate people, 15-60 years old	29%	21%	18%	1,087 person(s)
Illiterate females, 15-60 years old	14%	11%	8%	521 person(s)
Illiterate people, 15-17 years old	11%	9%	9%	60 person(s)
Illiterate females, 15-17 years old	5%	5%	3%	24 person(s)
Illiterate people, 18-24 years old	27%	14%	16%	171 person(s)
Illiterate females, 18-24 years old	12%	8%	8%	83 person(s)
Illiterate people, 25-60 years old	33%	25%	20%	856 person(s)
Illiterate females, 25-60 years old	17%	13%	9%	414 person(s)

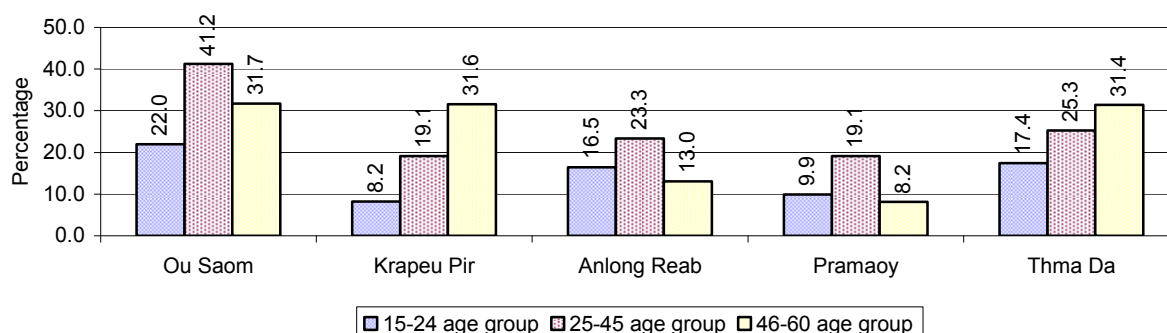
Note: Percentage is calculated on the basis of number of people in age each group.

3.1.21 Percentage illiterate People among 15-60 yrs old, by Commune, in 2008



Note: Percentages are calculated on the basis of number of people in that age group.

3.1.22 Percentage illiterate People for 15-24 yrs, 25-45 yrs and 46-60 yrs, by Commune, in 2008



Note: Percentage of illiterate people in each age group is calculated on the basis of number of people in that age group.

3.2 Health

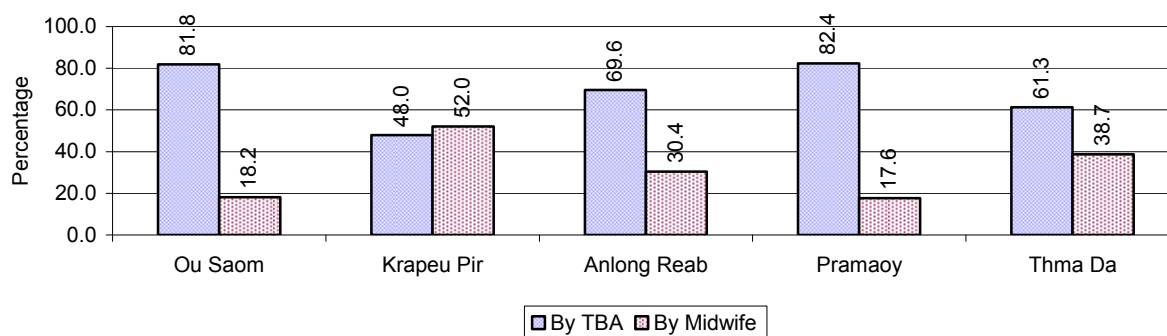
3.2.1 Health Situation of Women and Children, over 3 years

Description	2006	2007	2008
Number families with a birth during the year	215 families	214 families	226 families
Number of women who had their baby delivered by a TBA	159 person(s)	145 person(s)	165 person(s)
Percentage of women who had their baby delivered by a TBA	74 %	68 %	73 %
Number of women who had their baby delivered by a midwife	56 person(s)	69 person(s)	61 person(s)
Percentage of women had their baby delivered by a midwife	26 %	32 %	27 %
Number of mothers who died within 1 month of giving birth	1 person(s)	0 person(s)	0 person(s)
Mothers who died within 1 month of giving birth per 100,000 families having a delivery	465	0	0
Number of infants born during the year	214 person(s)	214 person(s)	226 person(s)
Number of Infants who died within 1 month	2 person(s)	2 person(s)	0 person(s)
Infants mortality within 1 month per 1,000 births	9	9	0
Number of children who died below the age of 5.	1 person(s)	0 person(s)	2 person(s)
Number of infants, aged 9-12 months, born during the year	151 person(s)	211 person(s)	215 person(s)
Nr. infants, aged 9-12 months, not receiving full immunization	59 person(s)	0 person(s)	24 person(s)
% of 9-12 months infants, not receiving full immunization	39 %	0 %	11 %

Note: TBA = Traditional Birth Attendant

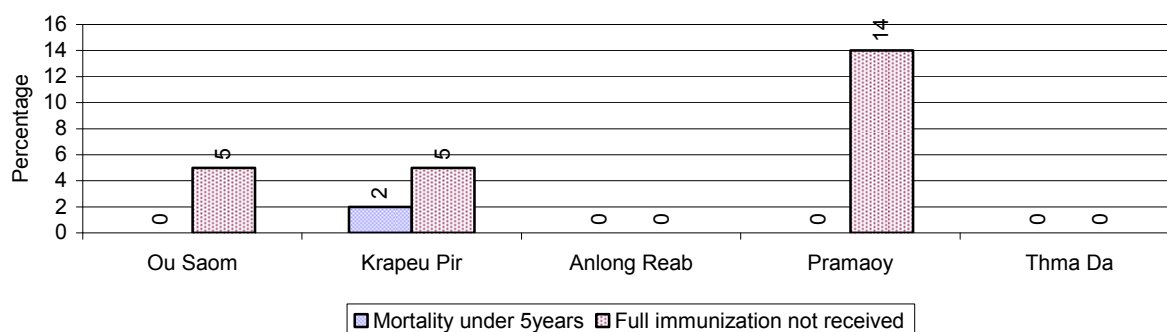
3.2.2 Mothers dying within 0 days to 1 month of giving Birth and Infants dying within 1 month in 2008, by Commune in this District in 2008

3.2.3 Percentage of Women delivering with a TBA or Midwife, by Commune



Note: Calculated as a percentage of total deliveries

3.2.4 Percentage of Children dying below 5 & of 9-12 months not receiving full Immunization, by Commune, in 2008



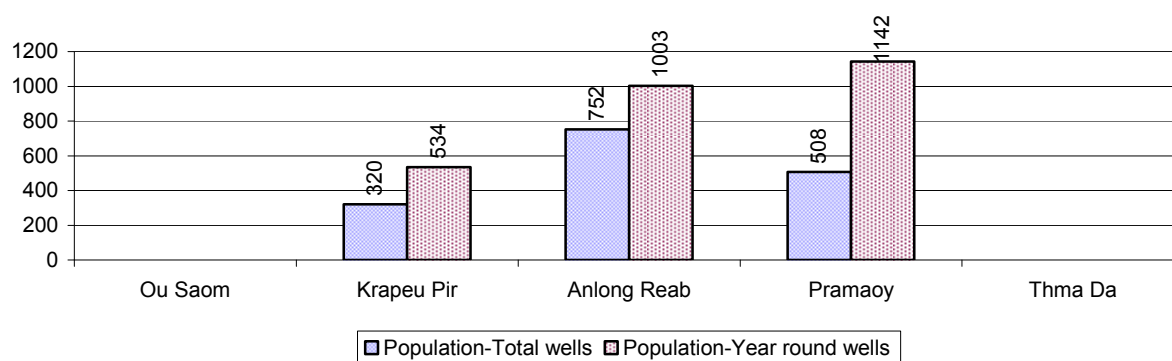
Note: Mortality rate calculated as a percentage of the total 5 year old population. Lack of immunization received calculated as a percentage of the total number 9-12 months olds there are

3.3 Water and Sanitation

3.3.1 Number of different types of Wells over 3 years

Type of wells	Number of wells by year		
	2006	2007	2008
Total number of pumped or mixed wells	5	10	14
Year-round usable pumped or mixed wells	4	7	8
Dry season unusable pump or mixed wells	1	3	6
Pump or mixed wells needing repair/rehabilitation	1	2	6
Total number of ring wells	4	3	4
Year-round usable ring wells	2	1	2
Dry season unusable ring wells	2	2	2
Ring wells needing repair/rehabilitation	2	2	2
Total number of unprotected dug wells	15	0	0
Year-round usable unprotected dug wells	5	0	0
Dry season unusable unprotected dug wells	10	0	0

3.3.2 Ratio of People to Wells, by Commune, in 2008

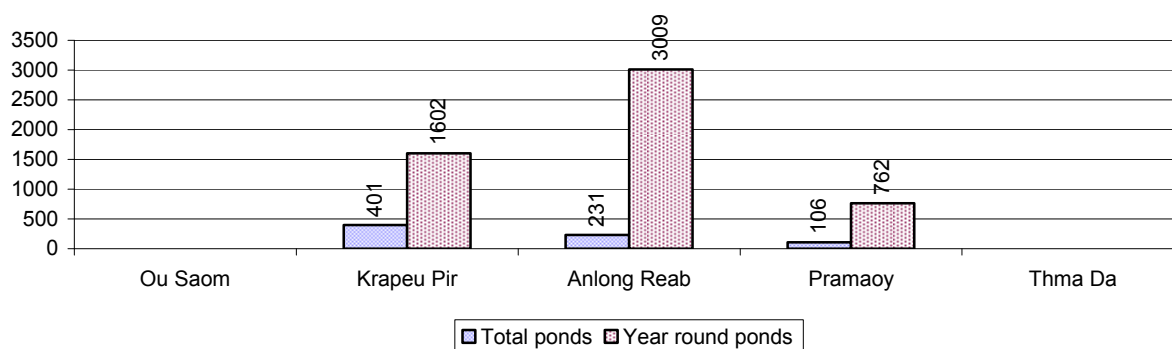


Note: Year-round wells excluding unprotected wells

3.3.3 Potable Ponds over 3 years

Type of Pond	2006	2007	2008
<i>Total number of normal-type ponds</i>	19 pond	47 pond	60 pond
Year-round usable normal-type ponds	12 pond	11 pond	8 pond
Dry season unusable normal-type ponds	7 pond	36 pond	52 pond
Normal-type ponds needing repair/rehabilitation	4 pond	37 pond	52 pond
<i>Total number of filter ponds</i>	0 pond	0 pond	0 pond
Year-round usable filter ponds	0 pond	0 pond	0 pond
Filter ponds, dry season unusable	0 pond	0 pond	0 pond
Filter ponds needing repair/rehabilitate	0 pond	0 pond	0 pond

3.3.4 Ratio of People to normal Ponds, by Commune in 2008



3.3.5 Ratio of People to Filter Ponds, by Commune, in 2008

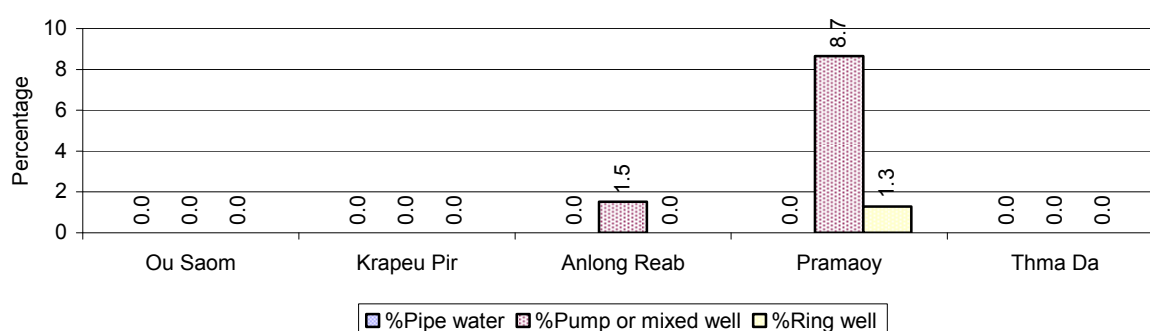
There were no filter ponds in this District in 2008

3.3.6 Source of potable Water for Households, over 3 years

Water sources	2006 %	2007 %	2008	
			%	Number
Families using water from purification system	0%	1 %	0 %	0 families
Families using water from pump, mixed wells	1%	6 %	4 %	98 families
Families using water from ring wells and open dug wells	3%	0 %	0 %	13 families
Families using water from pond	14%	14 %	10 %	271 families
Families using water from rain water storage	1%	0 %	0 %	0 families
Families using water from rivers, lakes, natural ponds and reservoirs	82%	80 %	85 %	2,221 families

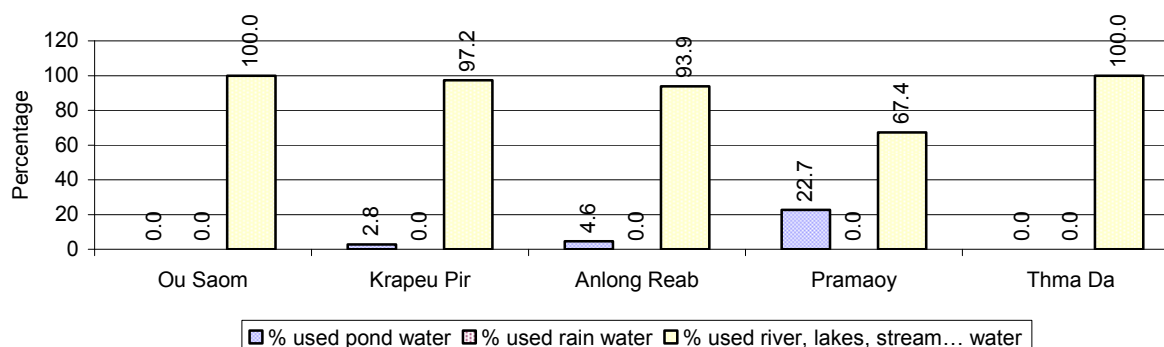
Note: Calculated as a percentage of the total number of families.

3.3.7 Percentage Families using different Water Sources, by Commune, in 2008



Note: Calculated as a percentage of the total number of families in each commune

3.3.8 Percentage Families using Water from Rain Water Storage, Ponds and natural Sources (rivers/lakes/natural ponds/reservoirs), by Commune, 2008



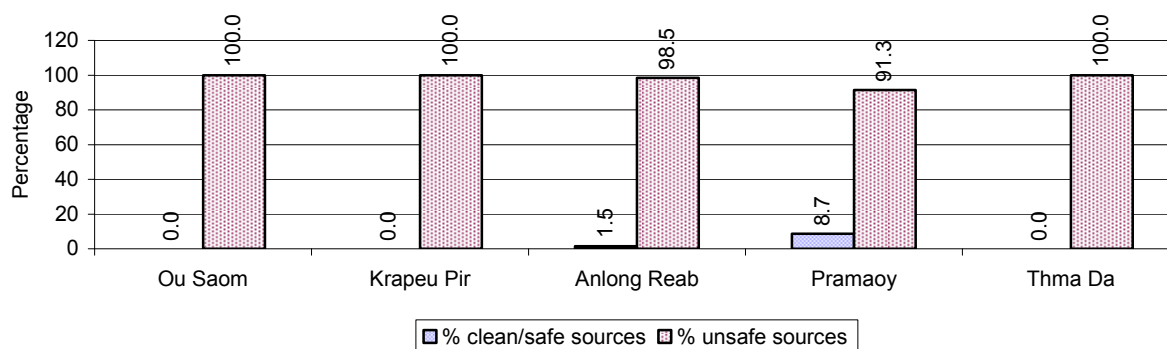
Note: Calculated as a percentage of the total number of families in each commune

3.3.9 Drinking Water Sources in the dry Season over 3 years

Percentage Families that get drinking water from:	2006 %	2007 %	2008	
			%	Number
from clean/safe sources	3 %	6 %	4 %	98 families
from unsafe sources	97 %	94 %	96 %	2,505 families

Note: Calculated as a percentage of the total number of families.

3.3.10 Percentage Families using safe and unsafe Water Sources in the dry Season, by Commune, in 2008



Note: Calculated as a percentage of the total number of families in each commune.

3.3.11 Drinking Water Purification by Households, over 3 years

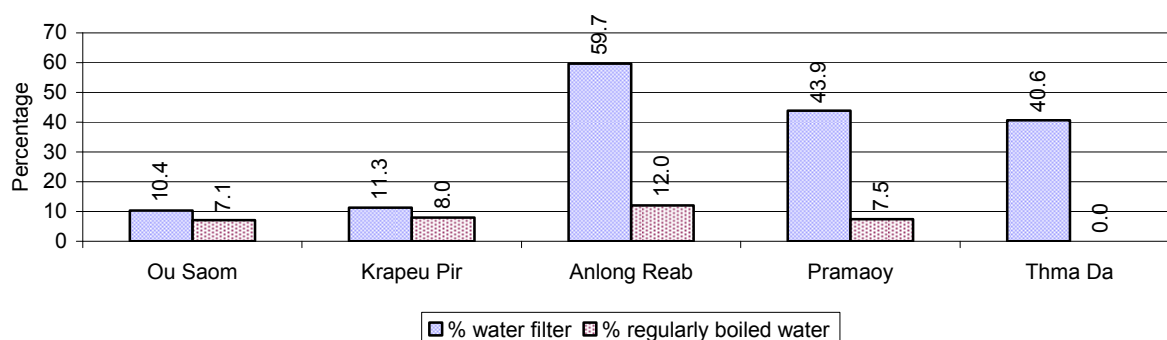
This table shows the different ways families make water safe for drinking.

Families, who:	2006 %	2007 %	2008	
			%	Number
Filter water for drinking	3%	43%	40 %	1,036 families
Boil water for drinking	81%	11%	8 %	201 families

Note: Calculated as a percentage of the total number of families

3.3.12 Percentage Families filtering Water or regularly boiling Water, by Commune, in 2008

This graph shows the different ways families make drinking water safe.



Note: Calculated on as a percentage of the total number of families in each commune.

3.3.13 Families' access to Water, over 3 years

Families access to water	2006 %	2007 %	2008	
			%	Number
Families with water at home or in less than 150m	2%	15%	16 %	404 families
Families with water 150m or more away from home	2%	0%	3 %	79 families

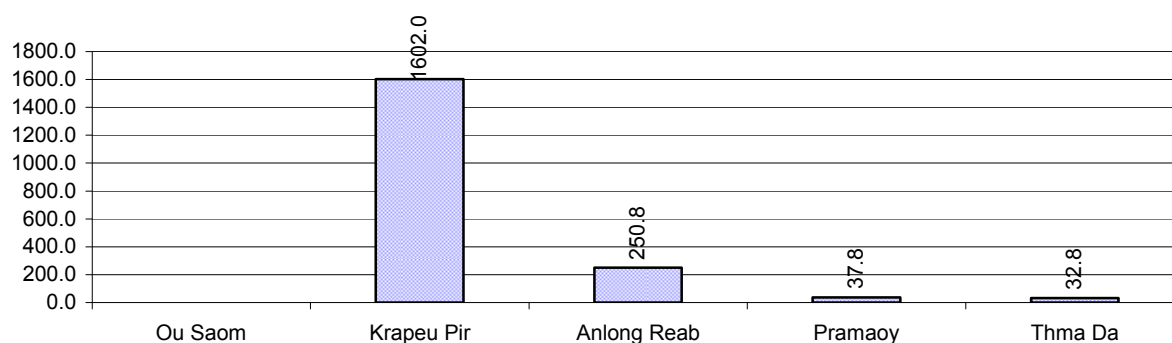
Note: Calculated as a percentage of the total number of families

3.3.14 Ratio of people to Latrines over 3 years

Description	2006 Ratio	2007 Ratio	2008	
			Ratio	Number
Ratio of people to latrines	105.9	52.5	66.3	172.0

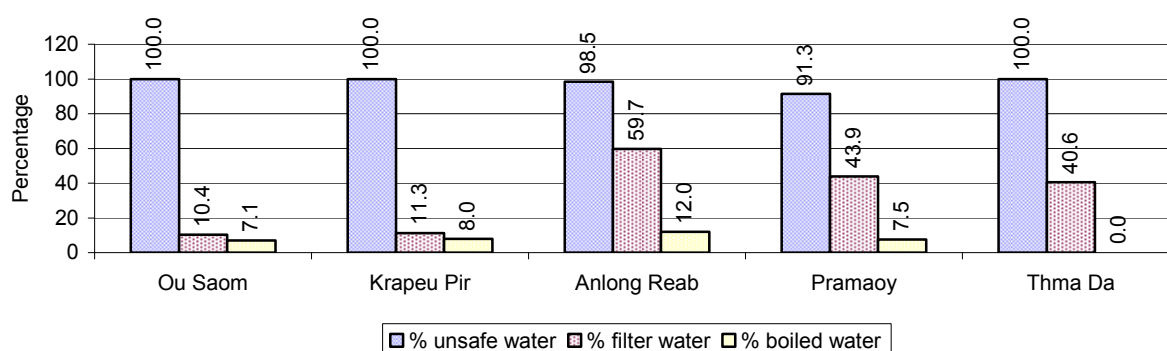
Note: Ratio calculated by dividing the number of houses with latrines by the total population

3.3.15 Ratio of People to Latrines, by Commune, in 2008



Note: Ratio calculated by dividing the number of houses with latrines by the total population in a Commune.

3.3.16 Percentage of Families drinking boiled, filtered or unsafe Water, by Commune, in 2008



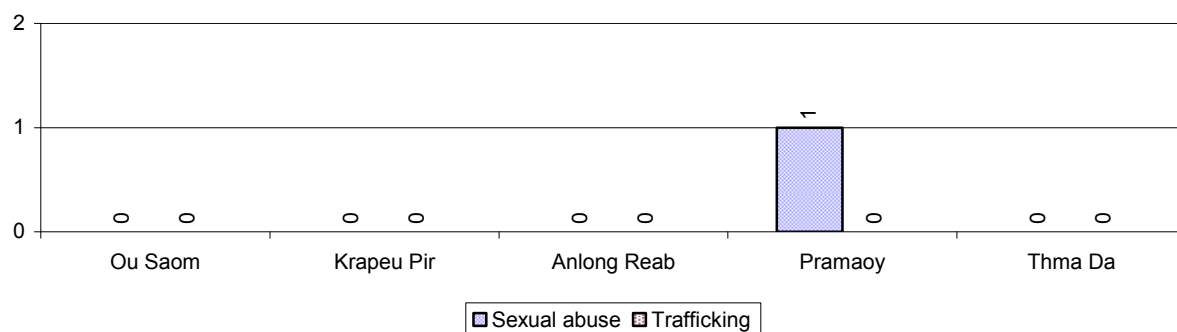
Note: Calculated as a percentage of the total number of families in each commune.

3.4 Vulnerable groups

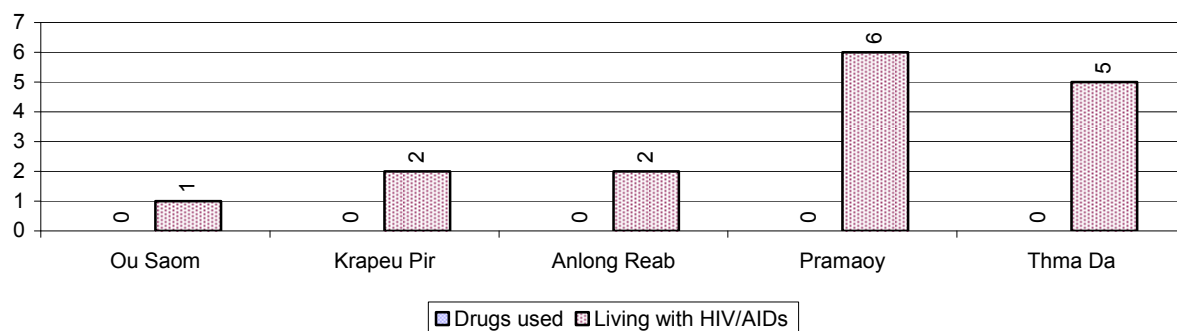
3.4.1 Vulnerable Groups in need of special Protection over 3 years

Vulnerable groups	2006	2007	2008
Victims of sexual abuse	1 person(s)	1 person(s)	1 person(s)
Victims of human trafficking	0 person(s)	1 person(s)	0 person(s)
Families with family member(s) using drugs	0 families	0 families	0 families
Families with family member(s) living with HIV/AIDS	6 families	12 families	16 families
Children under 18 yrs old whose parent died of AIDS	2 person(s)	0 person(s)	0 person(s)
Orphaned/abandoned children under 18 yrs old (all cases)	10 person(s)	3 person(s)	2 person(s)
Elderly persons without guardian	13 person(s)	15 person(s)	7 person(s)
Disabled people able to earn an income	1 person(s)	1 person(s)	0 person(s)
Disabled people unable to earn an income	1 person(s)	0 person(s)	2 person(s)
Disabled people under 18 yrs old	2 person(s)	0 person(s)	0 person(s)
Victims of natural disasters	321 families	29 families	107 families
Victims of land mines and unexploded weapons	15 person(s)	8 person(s)	0 person(s)

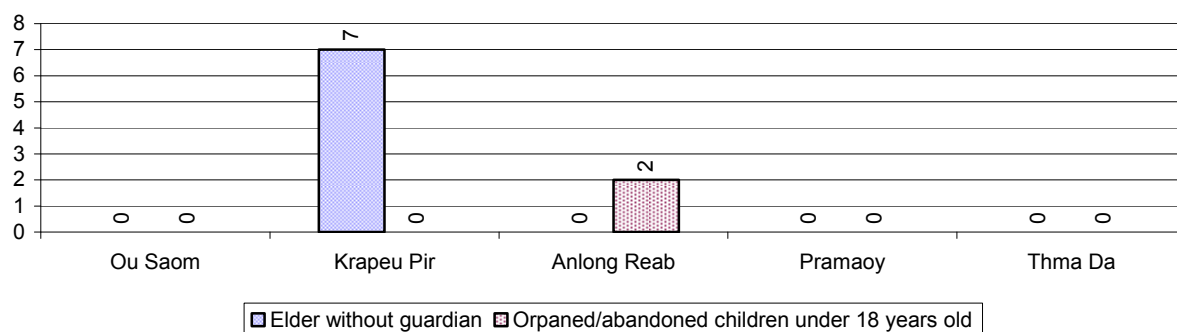
3.4.2 Registered Victims of sexual Abuse or Trafficking, by Commune, for 2008



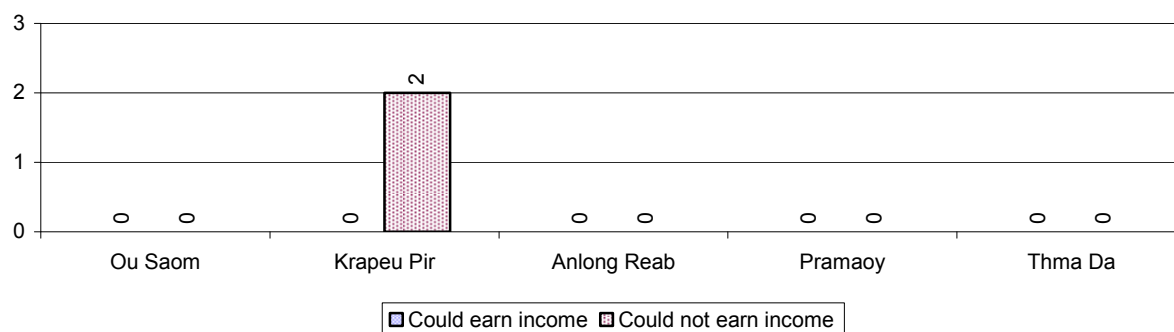
3.4.3 Registered Families with Member(s) using Drugs or living with HIV/AIDS, by Commune, for 2008



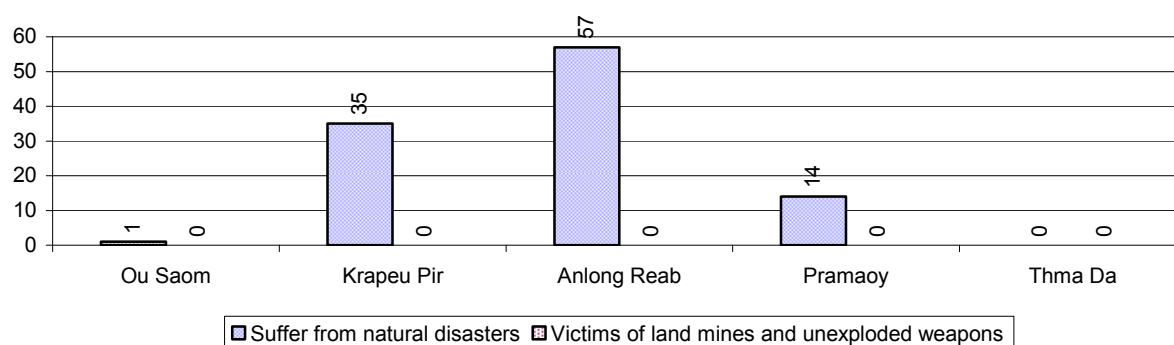
3.4.4 Elderly Persons without a Guardian and orphaned/abandoned Children under 18 years old, by Commune, for 2008



3.4.5 Number of disabled People who could or could not earn an Income, by Commune, for 2008



3.4.6 Number of Families who suffered from natural Disasters, and number of Victims of Land Mines and unexploded Weapons, by Commune, in 2008



3.5 Migration

3.5.1 Migration over 3 years

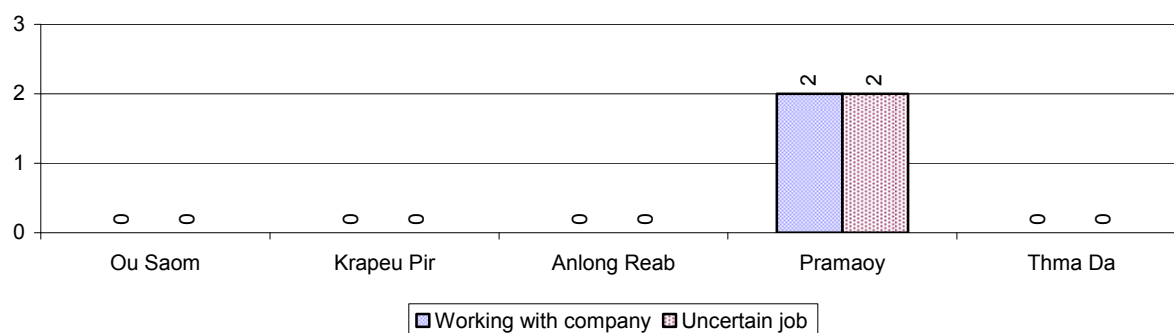
Description	2006	2007	2008
Number of families permanently in-migrated	111 families	192 families	173 families
Total number of people	401 person(s)	799 person(s)	926 person(s)
Total number of female	214 person(s)	401 person(s)	476 person(s)
Number of families permanently out-migrated	13 families	12 families	8 families
Total number of people	67 person(s)	53 person(s)	41 person(s)
Total number of female	36 person(s)	30 person(s)	24 person(s)
Number of families staying temporarily	45 families	60 families	179 families
Total number of people	151 person(s)	241 person(s)	764 person(s)
Total number of female	64 person(s)	126 person(s)	368 person(s)

3.5.2 Job Migration

Description	2006	2007	2008	
Number of people migrated to work with company/factory	0%	0%	0%	2 persons
Number of people migrated to work, but have uncertain jobs	0%	0%	0%	2 persons

Note: Calculated as a percentage of the total population of 18-60 year olds

3.5.3 Number of People working outside their home Villages in a Company/Factory or with an uncertain Job in 2008

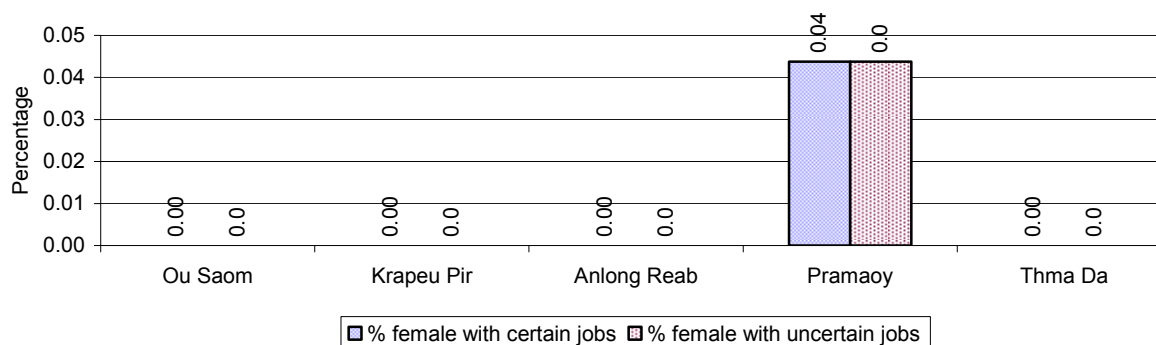


3.5.4 Female migration over 3 years

Description	2006 %	2007 %	2008	
			%	Number
Total number of migrants	0.2%	0.0%	0.0%	4 person(s)
Number of female migrants	0.1%	0.0%	0.0%	4 person(s)
Total number of migrants, who go to work with company/factory (with certain jobs)	0.1%	0.0%	0.0%	2 person(s)
Number of female migrants with certain jobs	0.1%	0.0%	0.0%	2 person(s)
Total number of migrants with uncertain jobs	0.1%	0.0%	0.0%	2 person(s)
Number of female migrants with uncertain jobs	0.0%	0.0%	0.0%	2 person(s)

Note: Calculated as a percentage of the total population

3.5.5 Percentage female Migrants with certain and uncertain Jobs, by Commune, in 2008



Note: Calculated as a percentage of the total population of the commune

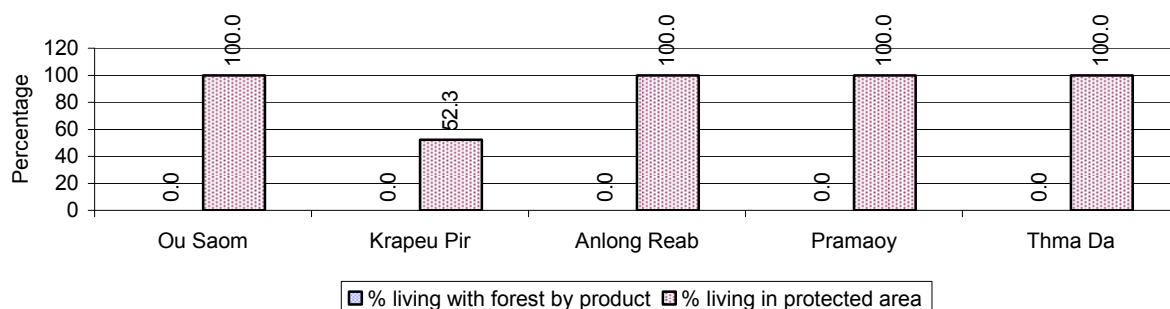
4 Natural Resources and Environment (NRE)

4.1 Families involved with NRE issues over 3 years

Description	2006 %	2007 %	2008	
			%	Number
Families living with forest by products	0 %	0 %	0 %	0 families
Families living in a protected area	88 %	95 %	93 %	2,430 families
Houses with access to garbage collection service	0 %	0 %	0 %	10 families
Families affected by environmental pollution	0 %	5 %	0 %	0 families
Families using chemical fertilizer	0 %	0 %	0 %	0 families
Families using chemical pesticide	5 %	0 %	5 %	121 families

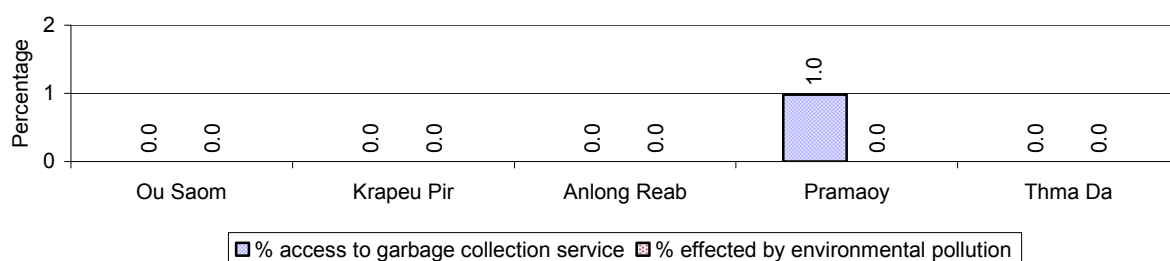
Note: Calculated as a percentage of the total number of families

4.2 Percentage of Families involved with Natural Resource issues, by Commune, for 2008



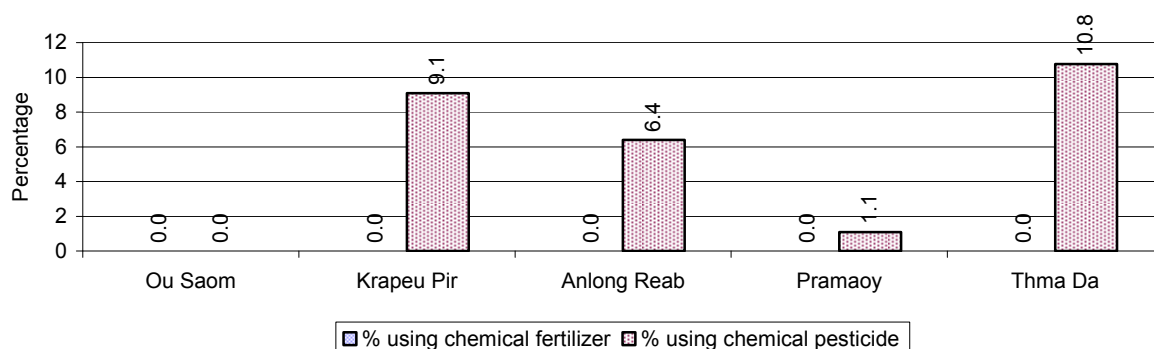
Note: Calculated as a percentage of the number of families in each commune

4.3 Percentage Houses with access to Garbage collection and Families affected by environmental Pollution, by Commune, for 2008



Note: Garbage collection is calculated as a percentage of the total number of houses in each commune and families affected by environmental pollution is calculated as a percentage of the total number of families in each commune.

4.4 Percentage Families using chemical Fertilizer and chemical Pesticides, by Commune, for 2008



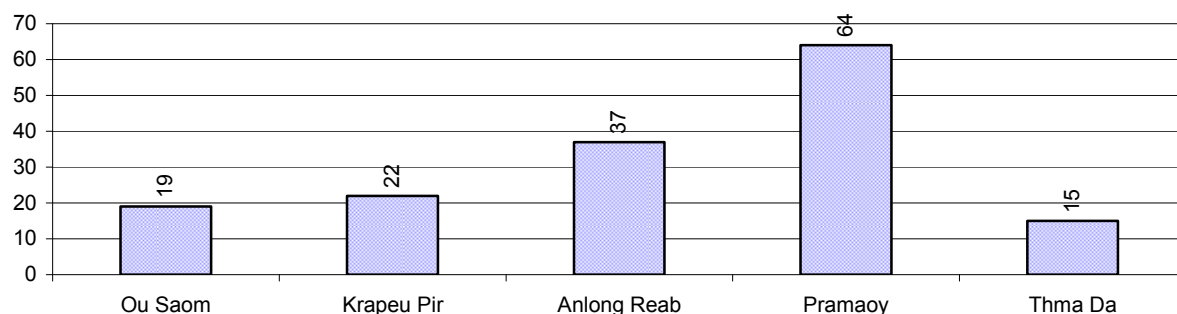
Note: Calculated as a percentage of the total number of families in each commune

5 Administration and Security

5.1 Birth Registration across 3 years

Description	2006	2007	2008
Number of infants to be registered	212 person(s)	212 person(s)	226 person(s)
Number of unregistered infants the year	54 person(s)	16 person(s)	157 person(s)
Percentage of infants unregistered	25 %	8 %	69 %

5.2 Number of unregistered Infants born in 2008, by Commune

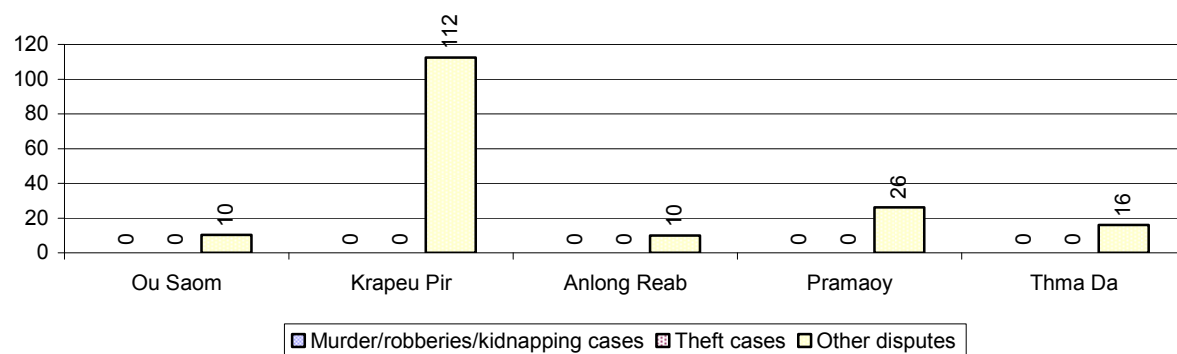


5.3 Registered criminal Cases over 3 years

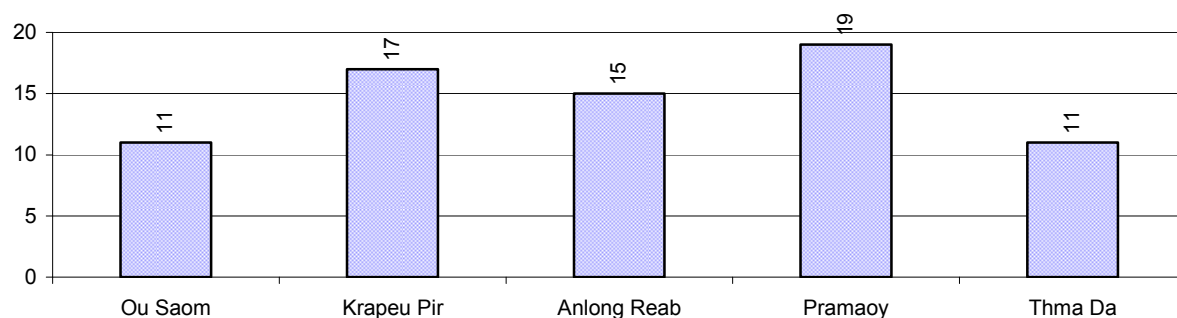
Description	2006	2007	2008
Murders, robberies and kidnapping cases	0 case(s)	0 case(s)	0 case(s)
Theft cases	8 case(s)	3 case(s)	0 case(s)
land dispute cases	60 case(s)	89 case(s)	73 case(s)
Other disputes cases	42 case(s)	34 case(s)	36 case(s)

Note: this reflects only registered criminal cases

5.4 Registered criminal Cases per 10,000 people, by Commune, for 2008



5.5 Number of registered Land Disputes, by Commune, in 2008

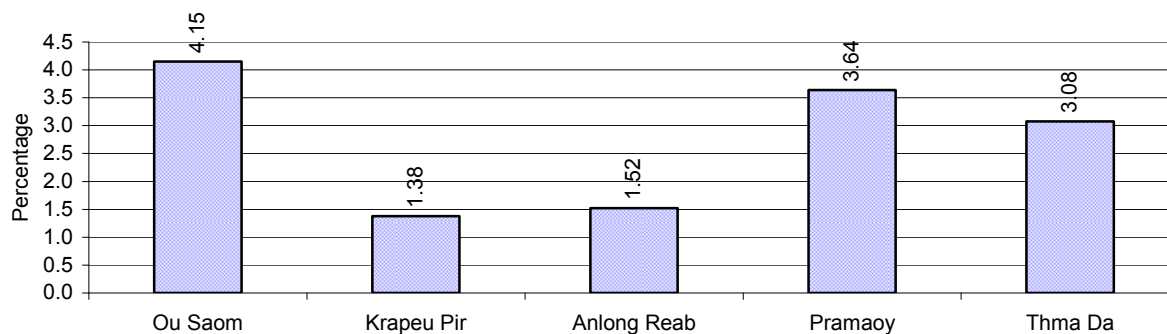


6 Gender

6.1 Registered Domestic Violence over 3 years

Description		2006	2007	2008
Families experiencing domestic violence		87 families	63 families	72 families(s)
% families experiencing domestic violence		4 %	3 %	3 %
Domestic violence cases reported by village chiefs		56 case(s)	14 case(s)	15 case(s)
Type	Physical violence	21 case(s)	11 case(s)	14 case(s)
	Sexual violence	9 case(s)	1 case(s)	0 case(s)
	Mental violence	7 case(s)	2 case(s)	1 case(s)
	Household economic violence	19 case(s)	0 case(s)	0 case(s)
Number of administrative decisions on domestic violence		13 case(s)	14 case(s)	9 case(s)
% of administrative decisions on domestic violence		23 %	100 %	60 %

6.2 Percentage of registered cases of Families experiencing domestic Violence, by Commune, in 2008



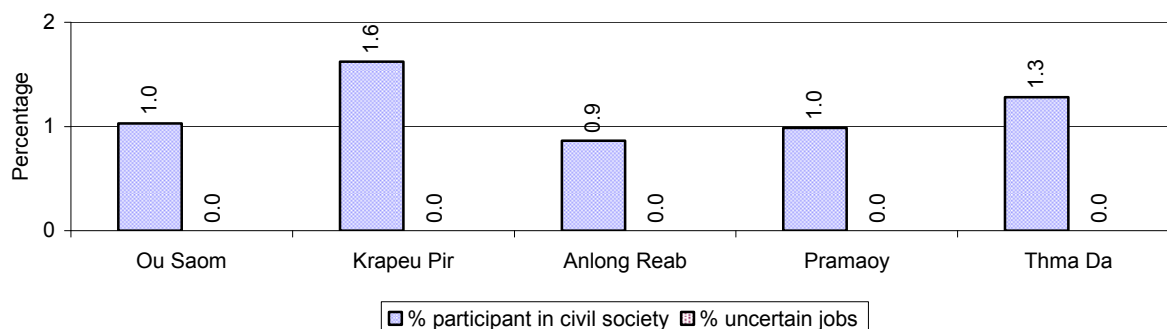
Note: Calculated as a percentage of the total number of families in each commune

6.3 Women's involvement over 3 years

Description	2006 %	2007 %	2008	
			%	Number
People participating in civil society	1%	2%	2%	236 person(s)
Women participating in civil society	1%	1%	1%	123 person(s)
People, 18-60 yrs, with uncertain/irregular jobs	0%	0%	0%	0 person(s)
Women, 18-60 yrs, with uncertain/irregular jobs	0%	0%	0%	0 person(s)

Note: Participation can be in NGOs, CBOs, credit groups, women's unions, parties and other civil society organizations. The first section is calculated as a percentage of the total population. The second section is calculated as a percentage of the total 18-60 year old population.

6.4 Percentage of Female Participants in Civil Society and of 18-60 year women with uncertain Jobs, by Commune, in 2008



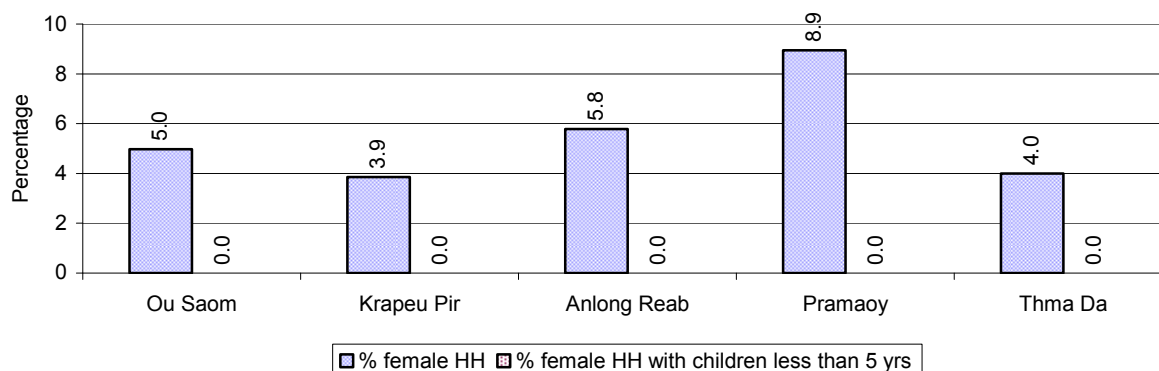
Note: Percentage of female participants in civil society is calculated as a percentage of the total population per commune. The percentage of 18-60 years old women with uncertain jobs is calculated as a percentage of the total 18-60 year old population per commune.

6.5 Female-headed Households over 3 years

Families with:	2006	2007	2008	
	%	%	%	Number
Households in which a woman is the family head	11%	6%	6%	168 families
Households in which a woman is the family head with children of less than 5 yrs	3%	0%	0%	0 families

Note: Calculated as a percentage of the total number of families

6.6 Percentage female-headed Households and with Children of less than 5 years old, by Commune, in 2008



Note: Calculated as a percentage of the total number of families in each commune
HH: Headed Household

7 Indigenous People in the District

7.1 Ethnic Minorities in the District over 3 years

Race of indigenous	2006		2007		2008	
	# families	# population	# families	# population	# families	# population
Phnong	11 families	44 person(s)	71 families	252 person(s)	0 families	0 person(s)
Kouy	0 families	0 person(s)	7 families	37 person(s)	7 families	37 person(s)
Stieng	0 families	0 person(s)	0 families	0 person(s)	0 families	0 person(s)
Mil	0 families	0 person(s)	0 families	0 person(s)	0 families	0 person(s)
Kroal	0 families	0 person(s)	0 families	0 person(s)	0 families	0 person(s)
Thmorn	0 families	0 person(s)	0 families	0 person(s)	0 families	0 person(s)
Khaonh	0 families	0 person(s)	0 families	0 person(s)	0 families	0 person(s)
Tompuonn	0 families	0 person(s)	0 families	0 person(s)	0 families	0 person(s)
Charay	0 families	0 person(s)	0 families	0 person(s)	0 families	0 person(s)
Kroeung	0 families	0 person(s)	0 families	0 person(s)	0 families	0 person(s)
Kavet	0 families	0 person(s)	0 families	0 person(s)	0 families	0 person(s)
Saouch	0 families	0 person(s)	0 families	0 person(s)	0 families	0 person(s)
Lun	0 families	0 person(s)	0 families	0 person(s)	0 families	0 person(s)
Kachak	0 families	0 person(s)	0 families	0 person(s)	0 families	0 person(s)
Praov	0 families	0 person(s)	0 families	0 person(s)	0 families	0 person(s)
Others	88 families	112 person(s)	195 families	801 person(s)	301 families	1,228 person(s)
Total	99 families	112 person(s)	273 families	838 person(s)	308 families	1,265 person(s)

Note: "Others" refer to other ethnic groups which are not listed.

7.2 Other Minorities in the District over 3 years

Minority	2006		2007		2008	
	# families	# population	# families	# population	# families	# population
Khmer Islamic	0 families	0 person(s)	4 families	44 person(s)	5 families	39 person(s)
Vietnamese	3 families	14 person(s)	0 families	0 person(s)	1 families	5 person(s)
Laos	0 families	0 person(s)	0 families	0 person(s)	0 families	0 person(s)

Note: Number of indigenous and minority population are additional data, so some village may not recorded.

SECTION C: PLANS AND PROJECTS

8 Priorities and Plans

8.1 Priorities of Commune Councils for 2009 in the District by Sector

The District Priority Activity Matrix (DPAM) data are taken from the CDPD. The DPAM is used for the District Integration Workshop (DIW), to show what kind of projects the commune has proposed in their Commune Investment Plan (CIP) for 2009. Donors, departments and other agencies then consider which projects they want to support and which projects they are not interested in. This results in Temporary Agreements between the Commune Council and the Supporter (NGO, Department, private donor, etc), as shown in table 8.2

No.	Project Name	Ou Saom	Krapeu Pir	Anlong Reab	Pramaoy	Thma Da	Req.Project
		150601	150602	150603	150604	150605	Total
Economic							
1	Compost fertilizer training	2 training					1
2	Fruit tree cultivation training					2 training	1
3	Mixed farming system training	2 training			3 training		2
4	Mushroom growing training			5 training			1
5	Rubber tree plantation			5 training			1
6	Animal vaccination request		200 Head	5 time		211 Head	3
7	Village veterinary training			1 training		3 person	2
8	Rice seed request	1500 Kg					1
9	Fruit trees seedling request			55000 Tree		6000 Tree	2
10	Calf for raising request		200 Head	150 Head	62 Head	30 Head	5
11	Sow for raising request	130 Head		120 Head	140 Head		3
12	Agricultural tools request	140 set	210 set		150 set		3
13	Vegetable seeds request			1 time			1
14	Rubber seed request			55000 Tree			1
15	Fish raising training					5 training	1
16	Fish fingerling request			600 Head			1
17	Earth road construction			15000 m		4000 m	2
18	Laterite/natural gravel road construction		16 km	1000 m		4000 m	3
19	Culvert construction	41 piece	2 place			6 place	3
20	Bridger construction	1 place	1 place			3 place	3
21	Earth road repairing	12 km			41000 m		2
22	Spillway construction		4 place	1 place		1 place	3
23	Cash credit	20 family			33 family		2
24	Market place creation/construction					1 place	1

District Data Book 2009: Development Plans and Projects

No.	Project Name	Ou Saom	Krapeu Pir	Anlong Reab	Pramaoy	Thma Da	Req.Project
		150601	150602	150603	150604	150605	Total
25	Development of natural tourism area	2 place			2 place		2
26	Electricity supply				1 set		1
Social							
1	Antenatal care service accessibility improvement			5 time			1
2	HIV/AIDS awareness education				1 training		1
3	Health/hygiene education for local people			5 time			1
4	Maternal health education		3 time		2 training		2
5	Children immunization provision		12 time	5 time	2 training	250 person	4
6	Health center staff training	2 training					1
7	VHV strengthening			2 time			1
8	TBA training			1 training		6 person	2
9	TBA equipment needs			2 time		6 set	2
10	Mosquito nets distribution/treatment		300 mosqui-net	600 mosqui-net	296 mosqui-net	540 mosqui-net	4
11	Malaria awareness education		3 time	5 time		2 time	3
12	Health staffs need at health center			1 training			1
13	Medical equipments need for health center	1 set			1 set		2
14	Latrine construction		283 toilet	531 toilet	110 toilet	70 toilet	4
15	Sanitation education		9 time				1
16	Commune health center construction			1 building			1
17	Water filter equipment supply		210 Container				1
18	Family wate jars provision				225 Jar	1 place	2
19	Pump wells construction	4 well	6 well		25 well		3
20	Ring wells construction	4 well		5 well			2
21	Ponds construction	4 Pond	4 Pond			3 place	3
22	Pump wells repairing					9 well	1
23	Literacy class			5 class		3 class	2
24	Junior high school construction	1 building	1 building	1 building		1 building	4
25	School renovation		2 building				1
26	School fence construction		1 place			1 place	2
27	Kindergarten school construction/repair	1 building		1 building	5 building		3
28	Vocational training	1 training			2 training	4 time	3

District Data Book 2009: Development Plans and Projects

No.	Project Name	Ou Saom	Krapeu Pir	Anlong Reab	Pramaoy	Thma Da	Req.Project
		150601	150602	150603	150604	150605	Total
NREM							
1	Environmental awareness and law education					3 training	1
2	Forestry law education	2 training	8 training				2
3	Education on importance of the forests	2 training					1
4	Wildlife protection law education	2 training		5 time			2
5	Bamboo forest plantation/coservation			531 Tree			1
6	Kravanh essence awareness dissemination	6 piece					1
7	NREM strengthening			5 time			1
8	Tree plantation project	30 ha	3645 Tree	850 Tree			3
9	Establishment of tree nursery		4 place				1
10	Illegal fishing prevention			5 time			2
11	Community forestry activities support		140000 m2	5 time		3 place	3
12	Forest protection strengthening					3 time	1
13	Waste management education		4 place				1
Administration and Security							
1	CC capacity strengthening		3 training				1
2	Administration and commune law training			1 training			1
3	Commune office construction/renovation	1 building	1 building	1 building	1 building	1 building	5
4	Village office construction/renovation	4 building	3 building	5 building	4 building		4
5	Radio communication provision			1 set			1
6	Transportation mean requesting		2 set				1
7	Major equipment to support commune administration			10 set			1
8	Commune office furniture			1 set			1
9	Generator and lamp for commune office		2 set				1
10	Land law dissemination		4 time	1 time	5 training	2 time	4
11	Gambling control/elimination activation			5 time		12 time	2
12	Drug business/use prevention					2 time	1
13	Demining project		48 km	100 ha	500 ha	400 ha	4
14	Mine and UXO awareness education			5 time			1
15	Law/regulation dissemination		6 training				1
16	VDC formation/strengthening			1 training			1
17	Water pump group establishment				10 set		1
Gender							
1	Gender mainstreaming concept training			2 training	5 training		2

District Data Book 2009: Development Plans and Projects

No.	Project Name	Ou Saom	Krapeu Pir	Anlong Reab	Pramaoy	Thma Da	Req.Project
		150601	150602	150603	150604	150605	Total
2	Women role in development strengthening/dissemination		4 training		3 training		2
3	Gender mainstreaming among local people		4 training				1
4	Women & Children FP strengthening		4 training	10 time	2 time	3 time	4
5	Gender FP strengthening	1 time					1
6	Law against domestic violence dissemination	2 training	4 training	10 time	2 training	3 time	5
7	Trafficking of women/children control activity strengthening		4 training	2 time	2 time		3
8	Children protection community network creation/strengthening					1 Team	1

Source: CDPD – District Priority Matrix

8.2 Temporary Agreements by Commune, for 2009²

At the District Integration Workshop (DIW) the Supporters (donors, agencies, private donors, NGOs, etc.) identify which projects/activities they would like to support or they put forward their own projects to be implemented in a particular commune. Once there is agreement between Commune Councils and Supporters on specific projects a **Temporary Agreement** is signed by the commune and the Supporter to show their mutual commitment to the identified projects/activities.

It is important to keep in mind that such Temporary Agreements do not necessarily result in implementation.

8.2.1 Temporary Agreements for 2009 as per DIW 2008 for Commune: Ou Saom

Commune GIS	Commune	Temporary Agreements				Supporter	Funding Source	Listed in CIP before DIW
		Project Name	Quantity	Unit	Est.Cost (K.Riels)			
Social								
150601	Ou Saom	Chorng-phnong indigenous culture conservation	2	training	20000	Enfants et Development		<input type="checkbox"/>
150601	Ou Saom	Vocational training	1	training	18000	Department of Labor and Vocational Training		✓
NREM								
150601	Ou Saom	Wildlife protection law education	3	time	24000	Forest administration		✓

8.2.2 Temporary Agreements for 2009 as per DIW 2008 for Commune: Krapeu Pir

Commune GIS	Commune	Temporary Agreements				Supporter	Funding Source	Listed in CIP before DIW
		Project Name	Quantity	Unit	Est.Cost (K.Riels)			
Economic								
150602	Krapeu Pir	Calf for raising request	1	training	150000	Enfants et Development		✓
Social								
150602	Krapeu Pir	Sanitation education	1	training	25000	Enfants et Development		✓
NREM								
150602	Krapeu Pir	Illegal fishing activities control	2	time	8000	Save Cambodia's Wildlife		☐

² Not all the data from the CDPD has been translated to English, this has resulted in some cells in the TA tables being blank.

8.2.3 Temporary Agreements for 2009 as per DIW 2008 for Commune: Anlong Reab

Commune GIS	Commune	Temporary Agreements				Supporter	Funding Source	Listed in CIP before DIW
		Project Name	Quantity	Unit	Est.Cost (K.Riels)			
Economic								
150603	Anlong Reab	S.R.I and chicken growing training	1	Team	800	Centre d'Etude et de Development Agricole Cambodgien		<input type="checkbox"/>
150603	Anlong Reab	Cash saving group and association	1	time	28	Centre d'Etude et de Development Agricole Cambodgien		<input type="checkbox"/>
150603	Anlong Reab	Calf for raising request	20	Head	60000	Enfants et Development		✓
Social								
150603	Anlong Reab	Vocational training	12	Month	5000	Department of Women		<input type="checkbox"/>
150603	Anlong Reab	Health/hygiene education for local people	2	time	85	Enfants et Development		✓
NREM								
150603	Anlong Reab	NRM illegal activities control	5	Forestry Community	3000	Save Cambodia's Wildlife		<input type="checkbox"/>
150603	Anlong Reab	Sun flower and Castor oil bean planting	200	ha	25000	Development Program for Khmer Student		<input type="checkbox"/>
150603	Anlong Reab	Cassava, sugar cans and bean growing	200	ha	25000	Development Program for Khmer Student		<input type="checkbox"/>
150603	Anlong Reab	Aloes wood and rubber tree planting	200	ha	128000	Development Program for Khmer Student		<input type="checkbox"/>
150603	Anlong Reab	Wildlife protection law education	12	time	2400	Forest administration		✓
150603	Anlong Reab	NREM strengthening	5	Forestry Community	32000	Save Cambodia's Wildlife		✓

8.2.4 Temporary Agreements for 2009 as per DIW 2008 for Commune: Pramaoy

Commune GIS	Commune	Temporary Agreements				Supporter	Funding Source	Listed in CIP before DIW
		Project Name	Quantity	Unit	Est.Cost (K.Riels)			
Economic								
150604	Pramaoy	Calf for raising request	20	Head	250000	Enfants et Development		✓
Social								
150604	Pramaoy	Maternal health education	2	time	8000	Enfants et Development		✓
150604	Pramaoy	Vocational training	12	Month	5000	Department of Women	PIF	✓
NREM								
150604	Pramaoy	Illegal fishing activities control	5	Forestry Community	4000	Save Cambodia's Wildlife		☐
150604	Pramaoy	NRM protected community support	1	Forestry Community	4000	Save Cambodia's Wildlife		☐
Gender								
150604	Pramaoy	Women & Children FP strengthening	12	Month	840	Department of Women	PIF	✓

8.2.5 Temporary Agreements for 2009 as per DIW 2008 for Commune: Thma Da

Commune GIS	Commune	Temporary Agreements				Supporter	Funding Source	Listed in CIP befor DIW
		Project Name	Quantity	Unit	Est.Cost (K.Riels)			
Economic								
150605	Thma Da	Calf for raising request	15	Head	30000	Enfants et Development		✓
Social								
150605	Thma Da	Health care education program	1	training	1250	Enfants et Development		☐
150605	Thma Da	Vocational training	1	training	144	Department of Labor and Vocational Training		✓
NREM								
150605	Thma Da	Illegal fishing activities control	2	time	800	Save Cambodia's Wildlife		☐

Source: CDPD, District Level Detail TA resulting from DIW

8.3 Outputs, estimated and actual costs of C/S Fund Projects between 2005 and 2008, by Commune

Commune	Project Type	Budget Year	Output		Quantity	Unit	Unit Cost MR	
			Description	Type			Estimate	Actual
Ou Saom	Education	2005	School furniture	New	1	School room	3.22	9.10
Ou Saom	Education	2005	Pour flush latrine with double waste tank system	New	1	Latrine room	6.18	9.10
Ou Saom	Education	2006	Wooden school with tile roof, earth floor	New	3	School room	25.13	26.56
Ou Saom	Education	2006	School furniture	New	3	School room	1.47	26.56
Ou Saom	Education	2007	Wooden school with tile roof, concrete floor	Upgrade	3	School room	18.78	18.50
Ou Saom	Education	2008	Wooden school with tile roof, concrete floor	Upgrade	2	School room	24.27	24.20
Krapeu Pir	Rural Transport	2005	Wood bridge, 5 tonne standard, concrete abutments	New	1	Place	16.94	14.00
Krapeu Pir	Rural Transport	2006	Wood bridge, 5 tonne standard, concrete abutments	New	1	Place	23.79	20.79
Krapeu Pir	Education	2008	Wooden school with tile roof, earth floor	New	2	School room	42.09	41.09
Anlong Reab	Rural Transport	2005	Wood bridge, 5 tonne standard, concrete abutments	New	1	Place	18.43	15.50
Anlong Reab	Irrigation	2008	Diversion weirs (general)	New	1	Place	64.53	64.43
Pramaoy	Rural Transport	2005	Single pipe culvert	New	2	Place	6.44	16.80
Pramaoy	Rural Transport	2005	Double pipe culvert	New	2	Place	14.59	16.80
Pramaoy	Rural Transport	2006	Double pipe culvert	New	1	Place	6.40	29.88
Pramaoy	Rural Transport	2006	Single pipe culvert	New	1	Place	6.05	29.88
Pramaoy	Rural Transport	2006	Single cell box culvert	New	1	Place	17.44	29.88
Pramaoy	Rural Transport	2008	Earth road	Upgrade	1.8	Km	41.47	41.30
Thma Da	Rural Transport	2005	Wood bridge, 5 tonne standard, concrete abutments	New	1	Place	25.93	21.90
Thma Da	Rural Transport	2006	Double pipe culvert	New	1	Place	8.25	28.55
Thma Da	Rural Transport	2006	Single cell box culvert	New	1	Place	20.51	28.55
Thma Da	Rural Transport	2007	Single pipe culvert	New	1	Place	3.98	17.40
Thma Da	Rural Transport	2007	Triple pipe culvert	New	1	Place	13.76	17.40
Thma Da	Rural Transport	2008	Single pipe culvert	New	4	Place	20.73	20.00

Source: PID

8.4 Total Expenditure on C/S Fund Projects by sector and commune between 2005 and 2008

Sector	Total Cost in Million Riels				
	Ou Saom	Krapeu Pir	Anlong Reab	Pramaoy	Thma Da
Education	78.36	41.09			
Irrigation			64.43		
Rural Transport		34.79	15.50	87.98	87.85

Source: PID

8.5 Actual 2009 C/S Fund projects by Commune

Commune	Project Type	Project Output		Quantity	Unit	Fund Source (Riels)		
		Description	Type			Total	C/S	Local Contribution
Pramaoy	Rural Transport	Earth road	New	1.45	km	34,851,728	34,540,868	310,860
Pramaoy	Rural Transport	Single pipe culvert 0.8m diameter	New	2	Place	34,851,728	34,540,868	310,860
Thma Da	Rural Transport	Earth road	New	1.5	km	27,788,520	27,540,720	247,800

Source: PID

9 District level Projects from 2006 to 2009

District Initiative Projects (DIPs) are funded by Danida, DFID and PSDD (UNDP, DFID and SIDA).

Funding for 2006-2008

Between 2006 and 2008 there were 14 provinces funded by PSDD and 10 by Danida and DFID. The list of provinces and who funded these is below

Danida and DFID funded DIPs:

Kampong Cham	Kampong Speu	Koh Kong	Kratie	Monduliri
Pursat	Ratanakiri	Siem Reap	Sihanoukville	Kep

PSDD funded DIPs:

Banteay Meanchey	Battambang	Kampong Chhnang	Kandal	Phnom Penh
Prey Veng	Svay Rieng	Takeo	Kampong Thom	Preah Vihear
Stung Treng	Kampot	Oddar Meanchey	Pailin	

Funding for 2009

In 2009 there was a change to the number of provinces funded by the two streams. Danida and DFID were still funding the same 10 provinces they had been funding the previous three years, but two more provinces were added *Kampong Thom and Kampot*. Now PSDD funds 12 provinces and Danida and DFID fund 12.

9.1 District Initiative Infrastructure Projects from 2006 to 2009

9.1.1 District Initiative Infrastructure Projects for 2006 to 2008

Date	Project Name	Implementing Agencies	Budget (US\$)	Project Output & Capacity	Number of Beneficiaries
2007	Build double culvert 2 places	Inter-commune	4,250.00		
2008	Spillway construction of Krapeu Pi	Inter-commune	6,000.00	1 place	2 communes, 120 families
2008	Spillway construction of Thmar Da	Inter-commune	6,000.00	1 place	2 communes, 136 families

9.1.2 District Initiative Infrastructure Projects in 2009

No District Initiative Infrastructure Projects have been implemented in this district for 2009

9.2 District Initiative Service Projects from 2006 to 2009

9.2.1 District Initiative Service Projects for 2006 to 2008

Date	Project Names	Implementing agencies	Budget (US\$)	Project Output & Capacity	Number of Beneficiaries
2007	Training on rice cultivation technique through natural way	District Agri	1,787.30		
2007	Education on land law	District Land	587.00		
2007	Education, dissemination and strengthening role of women in development	District WA	617.50		
2007	Gender mainstreaming in NRM	District WA	557.00		
2007	Farmers trained on related AH and P extension techniques and demonstration (establish cow raising group)	District Agri	18,298.30		
2007	Arrange District Integration Work shop	District Planning	150.00		
2008	Support fruit tree groups	NA	3,400.00	2 groups	60 farmers
2008	Support vegetable plantation groups	NA	3,800.00	2 groups	60 farmers
2008	Support pig raising groups	NA	6,300.00	2 groups	40 farmers
2008	Training on sewing groups on economic analysis	District WA	108.00	1 course	8 women
2008	Support to scarf weaving group	District WA	1,392.00	1 group	8 women

9.2.2 District Initiative Service Projects in 2009

Project Name	Sector	Implementing Agency	Budget	Project outputs/ capacities	No. of Beneficiaries		Progress	Remarks on Issues of Progress
					Total	Female		
Establish handicraft group using bamboo	CUL	PMC	\$2,000.00	2 groups	100	75	0%	In the process of finding service provider
Establish cow raising groups	AGR	PMC	\$8,300.00	4 groups/32 families	160	96	0%	Would bid on 14th July 2009
Conduct fish raising training and demonstration	AGR	PMC	\$3,000.00	120 families/8 demo ponds	520	395	0%	Would bid on 14th July 2009
Support to scarf weaving group established in 2008	GEN	WA Office	\$1,270.00	1 group	40	20	40%	In the process of material procurement

9.3 Inter Commune Council Projects in 2008 and 2009

9.3.1 ICC Projects in 2008

No ICC projects in this district at this time

9.3.2 ICC Projects in 2009

No ICC projects in this district at this time

Source: ICC project, Ministry of Interior (DoLA), -UNDP project for Local Governance – DDLG

9.4 Other Projects in 2008 and 2009

9.4.1 RPRP

There are no RPRP projects being implemented in this district or province at this time. The RPRP is only being implemented in Svay Rieng and Prey Veng

9.4.1.1 RPRP Projects from 2006 to 2008

No RPRP projects in this district at this time

9.4.1.2 RPRP Projects in 2009

No RPRP projects in this district at this time

9.4.2 Seth Korma

9.4.2.1 Seth Korma 2007

There are no Seth Korma projects being implemented in this district or province at this time.

Source: UNICEF

9.4.2.2 Seth Korma 2008

There are no Seth Korma projects being implemented in this district or province at this time.

Source: UNICEF

9.4.2.3 Seth Korma 2009

There are no Seth Korma projects being implemented in this district or province at this time.

Source: UNICEF

SECTION D: SERVICES AND ORGANIZATIONS

10 Infrastructure

10.1 Length of and Expenditure on Roads in 2008, by District

Roads	PUR	Bakan	Kandieng	Krakor	Phnom Kravanh	Pursat	Veal Veng
Length of paved road in the district in Km	868	181	96	122	117	160	192
Length of unpaved roads in the district in Km	1,396	450	172	243	217	112	203
Amount spent on construction of roads in 2008 (\$)	n/a	n/a	n/a	n/a	n/a	n/a	n/a
Amount spent on repair and rehabilitation of roads in 2008 (\$)	164,165	84,800	1,225	n/a	n/a	n/a	n/a

Note 1: Please note that these data are not necessarily complete or correct. The data are derived from government agencies at provincial and district level which used different recording systems, did not always have complete data or were, sometimes, less than willing to share their data.

Note 2: Please be aware that these data are incomplete due to the fact that the amounts for the construction, repair and rehabilitation recorded reflect only funds provided by the government, not the contributions by any other parties.

10.2 Scale of and Expenditure on Irrigation in 2008, by District

Irrigation	PUR	Bakan	Kandieng	Krakor	Phnom Kravanh	Pursat	Veal Veng
Number of irrigation schemes operating in 2008	54	15	13	13	3	6	4
Total nr of hectares under irrigation in dry season 2008	3,118	1,468	144	141	125	1,240	n/a
Total funds spent in 2008 on construction of irrigation systems (\$)	n/a	n/a	n/a	n/a	n/a	n/a	n/a
Total funds spent in 2008 on rehabilitation/repair of irrigation systems (\$)	n/a	n/a	n/a	n/a	n/a	n/a	n/a
Total funds spent in 2008 on operation and maintenance (\$)	n/a	n/a	n/a	n/a	n/a	n/a	n/a

Note 1: Please note that these data are not necessarily complete or correct. The data are derived from government agencies at provincial and district level which used different recording systems, did not always have complete data or were, sometimes, less than willing to share their data.

Note 2: Please be aware that the data above are incomplete as these only reflect funds provided by the government, not the contributions by farmers or other parties.

10.3 Power Supply in 2008, by District

Electricity	PUR	Bakan	Kandieng	Krakor	Phnom Kravanh	Pursat	Veal Veng
Total number of electricity connections to households	7,788	580	89	475	370	6,274	n/a
Total number of electricity connections to agencies, companies, organizations	n/a	n/a	n/a	n/a	n/a	n/a	n/a
Total volume in KWh of electricity consumed last in 2008	3,969,550	217,860	21,840	197,309	150,461	3,382,080	n/a
Total amount collected from users for consumed electricity (\$)	n/a	n/a	n/a	n/a	n/a	n/a	n/a
Per capita electricity consumption in 2008 in Kwh	48	63	41	69	68	90	n/a

Note 1: Please note that these data are not necessarily complete or correct. The data are derived from government agencies at provincial and district level which used different recording systems, did not always have complete data or were, sometimes, less than willing to share their data.

Note 2: These data only record electricity provided by electricity companies and does not include homes powered by generators or batteries (for this information see Section B: General Profile, Part 1: General Information; table 1.3.1 and chart 1.3.4).

Note 3: In most provinces electricity is only provided through town-based networks

Note 4: Per capita consumption is calculated by dividing the total volume of electricity produced in 2008 by the number of people living in each district as per the 2008 census (for the provincial data it is calculated against the number of people living in the province)

11 Health Facilities

Please note that the Operational District (health) boundaries are different to the administrative district boundaries. Therefore the data provided here shows the facilities, staff, NGOs etc in each Operational District within the province NOT the administrative district.

Acronyms

Com Cov	Commune Covered	MW2	Secondary Midwives
CPA	Complementary Package of Activities	NU1	Primary Nurse
Dr	Doctor	NU2	Secondary Nurse
FDH	Former District Hospital	OD	Operational District
HC	Health Center	Others	Other Staff
HC (NB)	Health Center no building	PHD	Provincial Health Department
HP	Health Post	Pop 04-05	Population Covered 2004 or 2005
MA	Medical Assistant	RH	Referral Hospital
MPA	Minimum Package of Activities	Vil Cov	Village Covered
MW1	Primary Midwives	VIL-HC	Distance from Village to Health Center

11.1 Health Facilities in the Province, by Operational District

Pursat	OD	RH	HC	HP
Bakan	1	1	10	
Sampov Meas	1		21	4
Total	2	1	31	4

11.2 Health Facilities and Staff in the province, by Operational District

This table shows health facilities, staff and coverage of health facilities in each operational district.

No	Facility Name	Type	Class	Dr	Ma	Nu2	Nu1	Mw2	Mw1	Others	Com Cov	Vil Cov	Pop. 04-05
Bakan													
1	Boeng Bat Kandaol	HC	MPA	0	0	2	0	2	0	3	1	13	10,495
2	Boeng Khnar	HC	MPA	0	0	2	0	1	0	3	1	13	12,634
3	Khmar Totueng	HC	MPA	0	0	3	1	1	1	2	1	12	9,257
4	Me Tuek	HC	MPA	0	0	2	1	0	2	7	1	15	12,978
5	Ou Ta Paong	HC	MPA	0	0	3	2	2	0	1	1	18	16,143
6	Rumlich	HC	MPA	0	0	1	1	0	1	4	1	13	8,679
7	Snam Preah	HC	MPA	0	0	3	2	4	0	0	1	20	16,510
8	Svay Daun Keo	HC	MPA	0	0	2	1	2	0	3	1	9	6,677
9	Ta Lou	HC	MPA	0	0	0	1	3	0	3	1	19	13,341

District Data Book 2009: Services and Organizations

No	Facility Name	Type	Class	Dr	Ma	Nu2	Nu1	Mw2	Mw1	Others	Com Cov	Vil Cov	Pop. 04-05
Total:				0	0	18	9	15	4	26	9	132	106,714
Sampov Meas													
1	Trapeang Chong	HC	MPA	0	0	3	0	2	0	5	1	20	19,400
2	Anlong Reab	HP	Nil	0	0	0	0	0	0	2	1	5	1,564
3	Ansa Chambak	HC	MPA	0	0	2	2	2	0	0	2	8	7,115
4	Boeng Kantuot	HC	MPA	0	0	5	2	1	1	1	4	27	16,795
5	Chheu Tom	HC	MPA	0	0	4	4	2	1	2	2	16	17,844
6	Chhouk Meas	HC	MPA	0	0	4	1	1	0	1	1	13	8,452
7	Kampong Luong	HC	MPA	0	0	5	0	0	1	0	1	5	9,797
8	Kandieng	HC	MPA	0	2	4	1	1	2	3	2	25	10,512
9	Koh Chum	HC	MPA	0	0	3	0	1	1	0	3	17	13,751
10	Krakor	FDH	MPA	0	3	12	4	2	1	4	3	32	19,901
11	Krapeu Pir	HP	NIL	0	0	0	0	0	0	1	1	3	1,052
12	Kravanh	FDH	MPA	2	0	6	6	5	5	7	3	16	18,050
13	Ou Saom	HP	NIL	0	0	0	0	0	0	2	1	4	796
14	Peal Nheak	HC	MPA	0	0	3	1	4	1	1	2	11	18,589
15	Pramaoy	HC	MPA	0	0	5	5	0	1	7	1	5	2,134
16	Preaek Tnaot	HC	MPA	0	0	3	0	2	0	1	2	16	13,233
17	Prey Nhi	HC	MPA	0	0	2	2	2	0	1	3	21	13,194
18	Prongil	HC	MPA	0	0	3	2	1	2	0	1	7	8,554
19	Reang Til	HC	MPA	0	0	2	1	0	1	4	1	5	4,436
20	Samraong	HC	MPA	0	0	3	1	1	2	0	2	14	11,744
21	Srae Sdok	HC	MPA	0	0	3	1	2	2	1	1	17	9,412
22	Sya	HC	MPA	0	0	5	1	1	3	1	2	23	15,441
23	Ta Sah	HC	MPA	0	0	5	1	1	1	1	2	16	19,779
24	Thma Da	HP	NIL	0	0	0	0	0	0	1	1	3	572
25	Voat Luong	HC	MPA	0	0	3	1	1	1	1	1	10	9,619
Total:				2	5	85	36	32	26	47	44	339	271,736
Total All				2	5	103	45	47	30	73	53	471	378,450

Source: MEDiCAM – Infrastructure - (http://www.medicam-cambodia.org/hsi/health_system/srch/index.asp?cboLcn=6&cmdSearch=Search&cboCHName=&cboType=)

11.3 Deliveries in 2007 in the Province, by Operational District

OD	Deliveries	Deliveries at home		Deliveries	Total deliveries	Total deliveries
	at HC	By Health Staff	ByTBAs	at RH	by Health Staff	by health staff and TBAs
Bakan	594	701	1292	142	1437	2729
Sampov Meas	935	2021	3135	502	3458	6593
<i>Sub-total</i>	<i>1529</i>	<i>2722</i>	<i>4427</i>	<i>644</i>	<i>4895</i>	<i>9322</i>

Source: MoH, Annual Statistics 2007

12 Education³

12.1 Schools, Classes, Students, Staff, for all levels, for 2007/2008 by District

District	Number of Schools	Disadv. Schools	Number of Classes	Classes in Pagoda	Enrollment		Repeaters		Teaching Staff		Non-Teaching Staff		Total Staff	
					Total	Girl	Total	Girl	Total	Female	Total	Female	Total	Female
Bakan	106	3	816	0	32,290	15,391	2,405	1,095	714	182	168	22	882	204
Kandieng	54	0	331	0	11,051	5,492	1,234	643	364	122	69	21	433	143
Krakor	73	1	499	0	19,291	9,224	1,474	625	479	208	121	26	600	234
Phnom Kravanh	53	2	382	2	14,770	6,898	1,177	491	336	127	83	16	419	143
Sampeuv Meas	57	0	491	0	18,192	8,570	970	374	623	285	140	55	763	340
Veal Veng	19	0	104	0	2,331	1,113	297	149	65	5	3	1	68	6
Whole Province	362	6	2,623	2	97,925	46,688	7,557	3,377	2,581	929	584	141	3,165	1,070
- Urban Area	57	0	491	0	18,192	8,570	970	374	623	285	140	55	763	340
- Rural Area	286	6	2,028	2	77,402	37,005	6,290	2,854	1,893	639	441	85	2,334	724
- Remote Area	19	0	104	0	2,331	1,113	297	149	65	5	3	1	68	6

12.2 Characteristics of Schools and School Principals for 2007/2008 by Commune

Commune	Number of Schools				2 - Shift	Floating	Schools	Attached	Schools Without		Characteristics of School Principals (Incharge)			
	Pre-Sch	Primary	College	Lycee	Schools	Schools	in Pagoda	Pre-Sch	Water Sup.	Latrine	Avg. Age	Avg. Service	U.Sec+ Ed.	Female
Ou Saom	0	2	0	0	1	0	0	0	2	0	45.5	10.0	0	0
Krapeu Pir	0	2	0	0	2	0	0	0	1	1	50.5	11.5	0	0
Anlong Reab	0	3	0	0	2	0	0	0	2	1	42.1	9.3	0	0
Pramaoy	0	9	0	1	6	0	0	0	9	5	37.3	9.5	4	0
Thma Da	0	1	1	0	1	0	0	0	2	1	40.2	9.0	1	0

³ All the data for section 12 comes from the Ministry of Education, Youth and Sport (MoEYS)

12.3 Enrolment by Level of Education, 2006/2007 by Commune

Commune	School	Pre school		Primary School		Lower Secondary School		Upper Secondary School		Enrolment	
		Total	Female	Total	Female	Total	Female	Total	Female	Total	Female
Ou Saom	2	0	0	211	97	0	0	0	0	211	97
Krapeu Pir	2	0	0	192	101	0	0	0	0	192	101
Anlong Reab	3	0	0	457	218	0	0	0	0	457	218
Pramaoy	9	0	0	923	436	203	86	0	0	1126	522
Thma Da	2	0	0	142	73	50	22	0	0	192	95

12.4 Enrolment by Level of Education, 2007/2008 by Commune

Commune	School	Pre school		Primary School		Lower Secondary School		Upper Secondary School		Enrolment	
		Total	Female	Total	Female	Total	Female	Total	Female	Total	Female
Ou Saom	2	0	0	193	92	0	0	0	0	193	92
Krapeu Pir	2	0	0	217	113	0	0	0	0	217	113
Anlong Reab	3	0	0	509	254	0	0	0	0	509	254
Pramaoy	10	0	0	973	457	195	76	38	11	1206	544
Thma Da	2	0	0	144	80	62	30	0	0	206	110

12.5 Aspects of Enrolment for 2007/2008 by Commune

Commune	% Repeaters (Total)			% Over-age Enrollment (Total)			% Repeaters (Girl)			% Over-age Enrollment (Girl)		
	Primary	L.Sec.	U.Sec.	Primary	L.Sec.	U.Sec.	Primary	L.Sec.	U.Sec.	Primary	L.Sec.	U.Sec.
Ou Saom	20.7	0.0	0.0	39.9	0.0	0.0	30.4	0.0	0.0	34.8	0.0	0.0
Krapeu Pir	24.9	0.0	0.0	25.3	0.0	0.0	24.8	0.0	0.0	30.1	0.0	0.0
Anlong Reab	13.6	0.0	0.0	8.1	0.0	0.0	15.0	0.0	0.0	7.1	0.0	0.0
Pramaoy	13.5	0.0	0.0	34.7	59.0	44.7	11.8	0.0	0.0	31.9	46.1	0.0
Thma Da	2.1	0.0	0.0	32.6	41.9	0.0	1.3	0.0	0.0	27.5	26.7	0.0

12.6 School Buildings for all schools in the District for 2007/2008, by Commune

Commune	Total Number of		Concrete/Brick Structure		Wooden Structure		Bamboo Structure		New Buildings		Buildings Without Good		
	Buildings	Rooms	Buildings	Rooms	Buildings	Rooms	Buildings	Rooms	Repaired	Constructed	Floor	Roof	Wall
Ou Saom	2	5	0	0	2	5	0	0	0	0	0	1	0
Krapeu Pir	2	6	0	0	2	6	0	0	0	0	0	1	1
Anlong Reab	5	14	2	8	3	6	0	0	0	2	0	1	0
Pramaoy	14	34	2	10	12	24	0	0	1	3	1	1	1
Thma Da	2	13	1	8	1	5	0	0	0	0	0	0	0

12.7 Conditions of Classrooms and Existence of Separate School Office and Library, by Commune

Commune	Number of Class rooms	Number of Classrooms			Classrooms Without Good			Number of Furniture needed				Schools with Separate	
		in Pagoda	New Repaired	New Constr.	Floor	Roof	Wall	Desks	Chairs	Black-board	Teacher Table	Office	Library
Ou Saom	5	0	0	0	0	3	0	0	0	5	2	0	0
Krapeu Pir	5	0	0	0	0	0	0	0	0	0	0	0	0
Anlong Reab	11	0	0	8	0	2	0	0	0	0	0	2	1
Pramaoy	26	0	1	7	3	2	2	0	0	0	2	2	0
Thma Da	9	0	0	0	0	0	0	0	0	0	0	1	0

12.8 Community Participation and Financing across all schools in the District for 2007/2008 by Commune

Commune	Parent Association				Commu. Teachers	Teaching Monks	PAP Fund (Riel)		Number of Schools Obtaining Funds from				
	Exists	Held Meet	Total	Female			per Student	per School	Sch. Income	Community	Gvt. For building	Abroad	IOs/NGOs
Ou Saom	2	2	2	0	0	0	12,884	1,359,300	0	0	0	0	0
Krapeu Pir	2	2	4	1	0	0	14,905	1,430,900	0	0	0	0	0
Anlong Reab	3	3	3	1	0	0	12,916	1,967,500	0	0	0	0	0
Pramaoy	9	8	3	1	0	0	12,724	2,035,820	0	2	0	0	0
Thma Da	2	2	4	0	0	0	17,806	1,709,350	0	0	0	0	0

12.9 Percentage Student Flow Rates and Graduation by level 2006/2007, by Commune

Commune	Primary Level (Grades 1-6)			Lower Secondary Level (Grades 7-9)			Upper Secondary Level (Grades 10-12)			Successful Candidates		
	Promotion	Repetition	Dropout	Promotion	Repetition	Dropout	Promotion	Repetition	Dropout	Grade 6	Grade 9	Grade 12
Ou Saom	72.0	19.0	9.0	0.0	0.0	0.0	0.0	0.0	0.0	21	0	0
Krapeu Pir	74.0	28.1	-2.1	0.0	0.0	0.0	0.0	0.0	0.0	23	0	0
Anlong Reab	74.0	15.1	10.9	0.0	0.0	0.0	0.0	0.0	0.0	29	0	0
Pramaoy	74.1	14.2	11.7	66.0	0.0	34.0	0.0	0.0	0.0	84	32	0
Thma Da	81.7	2.1	16.2	90.0	0.0	10.0	0.0	0.0	0.0	15	0	0

13 Staff and Resources at the District

This chapter presents data from the District Information System, collected around the middle of 2009 unless otherwise specified.

13.1 District Councilors elected in 2009

Name	Sex	Year of Birth	Function	Phone
អ៊ុន យ៉ង់	M	1956	Chairperson of The Council	016-926 168
ខឹម ធួក	M	1950	Councillor	016-201 053
ប៉ាន់ ពន្លក	M	1952	Councillor	016-418 924
ខុច សុខុន	F	1955	Councillor	016-933 962
ឯក សុផល	M	1950	Councillor	016-491 830
ប៊ូយ ភន	M	1944	Councillor	016-425 968
ជ័យ ម៉ុង	M	1945	Councillor	016-210 332

13.2 Committees of the Council

Please note at the time of producing the district data books the composition of the committees was not known for all district councils and therefore data were not available for 13.2.1, 13.2.2, 13.2.3.

13.2.1 Technical Facilitation Committee

13.2.2 Women's and Children's Affairs Committee

13.2.3 Procurement Committee

13.3 Board of Governors

13.4 Offices under Sala Krong, Sala Srok and Sala Khan

Office Name	Chief		Deputy Chief		No. of Staff				Office Area (m2)	No of vehicle (public or program)	
					State		Contract				
	M	F	M	F	M	F	M	F		vehicle	moto
District/ Khan Cabinet	1	0	1	0	2	0	0	0	200	0	1
Adminnistration Office	1	0	1	0	2	0	0	0	0	0	0
Economy Office	1	0	0	0	1	0	0	0	0	0	0
Social Affair Office	1	0	0	0	1	0	0	0	0	0	0

13.5 Municipality/District/Khan line offices

Office Name	Chief		Deputy Chief		No. of Staff				Office Area (m2)	No of vehicle (public or program)	
					State		Contract				
	M	F	M	F	M	F	M	F		vehicle	moto
District/ Khan Police Headquarter	1	0	4	0	119	0	0	0	108	0	8
District/ Khan Military Police Headquarter	1	0	3	0	10	0	0	0	108	0	0
District/ Khan Military Subregion	1	0	2	0	118	0	0	0	54	0	0
Planning Office	1	0	1	0	2	0	0	0	30	0	2
Women Affairs Office	0	1	0	0	1	0	0	1	30	0	1
Environment Office	1	0	0	0	1	0	0	0	Borrow	0	0
Education Office	1	0	2	0	301	150	0	0	620	0	1
Agriculture Office	1	0	0	0	3	0	0	0	80	0	1
Social Affairs Office	1	0	0	0	1	0	0	0	Borrow	0	0
Information Office	1	0	1	0	2	2	0	0	0	0	0
Public Work Office	1	0	0	0	1	0	0	0	Borrow	0	0
Post Office	1	0	0	0	1	0	0	0	Borrow	0	0
Lan Management Office	1	0	1	0	3	0	0	0	30	0	0

13.6 Properties and Equipment of District Administration

13.6.1 Buildings

Description	Unit	Number	Remark
Office building type			
- Concrete	building	1	
- Wood	building	0	
- Mixed	building	0	
Total floor space	m2		
- Concrete	m2	200	
- Wood	m2	0	
- Mixed	m2	0	
Building condition			
- Concrete	%	0	
- Wood	%	0	
- Mixed	%	0	
Office reserved land area	m2	122,500	
Total office land area	m2	26,400	

13.6.2 Means of Transport available at the District Administration

Description	Unit	Number	Remark
Vehicle (type, size and condition)	Vehicle	0	
Motorcycle (type, size and condition)	Motor	2	

13.6.3 Equipment in District Offices

Description	Unit	Number	Remark
Generator	per set	0	
Photocopy machine at the office	per set	0	
Private photocopy machine at the district town	place	3	
Telephone network (mobile line service)	network	2	011, 016
Telephone network (land line service)	network	0	
Fax (include Fax number)	per set	0	
Computer	per set	1	
Printer	per set	1	
Scanner	Per set	0	
Number of computers those can access Internet and email services in the municipality/ district/khan office (including the technical line offices (please provide the email address)	set	0	
Typewriters (including the technical line offices)	per set	2	
Staff of Municipality/district/khan office can use computer	person	3	

13.6.4 Equipment and facilities at the District Town

Description	Unit	Number	Remark
Availability of electricity at noon	Nr Hours	12	
Private internet and email services in the municipality/ district/khan town.	place	0	

13.7 Registered Revenue of the District Administration in 2008⁴**13.8 Services in the District****13.8.1 Public Sector Services**

Type of Infrastructure/services	Unit	Number	
		Public	Private
Schools			
Pre-school	room	1	0
Primary School	room	65	0
Secondary school	room	10	0
High School	room	5	0
University	room		
Health			
Health post	place	3	0
Health center	place	2	0
Referral Hospital	bed		

⁴ Please note that the data in this table are at best estimates. If the table appears blank it does not mean there is no revenue, just that the data have not been recorded/entered.

13.9 Civil Society Organizations active in the District

13.9.1 NGOs, Associations, Programs and Projects

Name	Abbr.	Sector Activities	No. of Target Communes	No. of Target Villages	Office in District
NA	FFI	ធនធានធម្មជាតិ	5	20	Yes
NA	HEFER	កសិកម្ម	2	10	Yes
NA	CEDAC	កសិកម្ម	5	20	Yes
NA	ADRA	សុខភាព	5	20	Yes
NA	RACHA	សុខភាព	5	20	No
NA	AK	អភិវឌ្ឍន៍សហគមន៍	5	20	Yes
NA	COCD	កសិកម្ម	5	20	Yes
NA	DCO	កសិកម្ម	5	20	Yes
NA	SCW	កសិកម្ម	2	10	Yes
NA	WRL	សង្គមកិច្ច	4	16	Yes
NA	CI	ធនធានធម្មជាតិ	1	4	Yes

13.9.2 Political Parties active in the Municipality, District and Khan

Name	Abbr.	Office in District
Cambodian People Party	CPP	Yes

13.10 Private Sector Organizations

13.10.1 Registered Companies in 2008, by District

On private sector at commune and/or district level	PUR	Bakan	Kandieng	Krakor	Phnom Kravanh	Pursat	Veal Veng
Businesses and Companies							
Number of registered agricultural enterprises (except family farms)	2	1	0	1	0	0	0
Number of registered shops, restaurants, transporters and other services	22	2	1	10	2	7	0
Number of manufacturing companies	49	31	9	0	1	8	0
Number of registered forestry enterprises	-	0	0	0	0	0	0
Number of registered mining companies	9	0	0	0	2	7	0
Number of fin/ancial institutions	32	10	3	6	4	9	0
Number of other commercial institutions	329	168	0	2	0	158	1
Estimated number of informal enterprises (not registered)	1,525	71	34	129	87	1,204	n/a
Employment							
Number of people employed in 2008 by companies or any other enterprises	784	121	17	39	18	589	n/a
Investment							
Amount invested in 2008 by private sector (\$)	n/a	n/a	n/a	n/a	n/a	n/a	n/a
Markets							
Number of markets, operating at least weekly	40	13	5	11	7	3	1

Note: These data are not comprehensive as different companies and business are registered with different departments and not all departments were able or willing to provide detailed information. The number of informal enterprises reflects a rough estimate, made at provincial level and could not be verified.

Source: Unofficially collected at Provincial Level

13.10.2 Farmers in 2008, by District

Credit	PUR	Bakan	Kandieng	Krakor	Phnom Kravanh	Pursat	Veal Veng
Volume of credit provided to farmers in 2008 (\$)	9,768,185	4,277,848	860,941	1,391,107	1,333,649	1,557,268	347,372
Number of farmers receiving credit in 2008	19,357	8,054	1,721	3,567	2,286	3,228	501
Volume of credit provided to companies in 2008 (\$)	2,924,622	400,000	252,461	758,889	379,449	885,370	248,453

Note: Please note that these data are not necessarily complete or correct. The data are derived from government agencies at provincial and district level which used different recording systems, did not always have complete data or were, sometimes, less than willing to share their data.

Source: Unofficially collected at Provincial Level

SECTION E: POVERTY DATA

14 Data on Poverty

14.1 Predicted Poverty Rates for 2009, by commune

The **Predicted Family Poverty Rate** is based on a statistical model (robust multilevel mixed effect regression) at village level developed by the NCDD M&E Unit and uses CDB data for making an estimate of the predicted poverty rate (this is: *the portion of total families in the district or commune who are expected to be poor*) for the following year using current year data.

The basis for this predicted poverty rate also uses IDPoor (a project of the Ministry of Planning with technical assistance provided by GTZ) data

Commune	2004	2009
Ou Saom	49%	40.90%
Krapeu Pir	46.80%	41.30%
Anlong Reab	44.80%	38.30%
Pramaoy	44.40%	33.10%
Thma Da	41.90%	31.20%

14.2 Poverty data from survey

14.2.1 Identification of Poor Households Program (IDPoor)

The Ministry of Planning IDPoor Program has developed standardized Procedures for Identification of Poor Households in rural areas. These Procedures are implemented using a participatory and consultative process by sub-national government structures and community representatives.

The IDPoor Program is managed by the Ministry of Planning (MOP), in cooperation with the Ministry of Interior's Department of Local Administration (DOLA). The program is supported by the Federal Republic of Germany, with technical assistance provided by German Technical Cooperation (GTZ). In 2009, AusAID also provided funding support to the Program.

Objective

The IDPoor Program aims to implement the Procedures for Identification of Poor Households in rural areas as widely as possible, in order to provide data on the level of poverty of areas and households that can be used by a large range of institutions and organizations for targeting services and development assistance to poor areas and poor households.

Coverage: During 2007, 2008 and 2009 the IDPoor Procedures have been implemented in 18 provinces (with partial or complete coverage), covering a total of around 7000 rural villages. The MOP and a number of NGO partners who are Health Equity Fund Operators have collaborated in collecting this data from different areas.

Categorization: Identified poor households are classified under two poverty categories: Poor Level 1 (very poor), and Poor Level 2 (poor). Households are classified based on data collected using a standard questionnaire, together with consideration by villagers of these households' special circumstances.

Further information: Please go to the IDPoor Program webpage at www.mop.gov.kh/Projects/IDPoor/tabid/154/Default.aspx

This District has not yet been covered by IDPoor